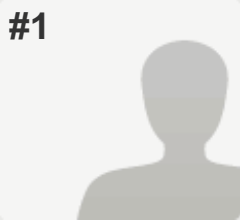


#1



COMPLETE

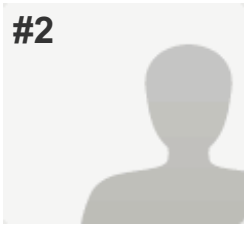
Collector: Web Link 1 (Web Link)
Started: Saturday, January 31, 2015 3:54:41 AM
Last Modified: Saturday, January 31, 2015 4:01:50 AM
Time Spent: 00:07:08
IP Address: 58.37.237.8

PAGE 1

Q1: How would you describe your relationship with your family?	Fairly Close
Q2: How comfortable are you with the people in your community? (1 = very uncomfortable; 5 = very comfortable)	
(no label)	4
Q3: How many friends could you call if you had a problem?	3-4
Q4: On average, how many hours do you spend on homework per week?	
(no label)	5-9 hours
Q5: How often do you usually smile throughout the day?	Sometimes
Q6: What is your usual expression when you meet a stranger for the first time?	:-(
Q7: How much time do you spend on social networking each day (wechat, qq, sms, skype, etc.)?	
(no label)	30 minutes to an hour
Q8: How many hours of sleep do you get per night?	7-8
Q9: Describe the quality of your sleep for the last 5 nights	I slept all night long without interruptions.
Q10: Do you agree with the following statement: Most people like me.	
(no label)	Strongly Agree
Q11: How would you describe the general attitude of the people around you?	
(no label)	Friendly

Q12: When other people around me are happy... (no label)	I am not affected.
Q13: How satisfied are you with your life right now/ (1=very unsatisfied; 10= very satisfied)	8
Q14: How long do you spend traveling to and from school most days?	Less than 20 minutes
Q15: How often do you daydream?	Sometimes
Q16: Do you agree with the following statement: I am usually able to have what I want.	Agree
Q17: What is the most important factor for happiness?	The opinion of people
Q18: Male or Female	Male
Q19: Grade Level	11
Q20: Homeroom	A

#2



COMPLETE

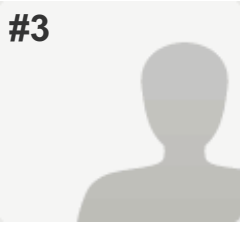
Collector: Web Link 1 (Web Link)
Started: Saturday, January 31, 2015 4:15:59 AM
Last Modified: Saturday, January 31, 2015 4:18:09 AM
Time Spent: 00:02:09
IP Address: 180.154.247.188

PAGE 1

Q1: How would you describe your relationship with your family?	Very Close
Q2: How comfortable are you with the people in your community? (1 = very uncomfortable; 5 = very comfortable)	
(no label)	5
Q3: How many friends could you call if you had a problem?	5 or more
Q4: On average, how many hours do you spend on homework per week?	
(no label)	Less than 1 hour
Q5: How often do you usually smile throughout the day?	All the time
Q6: What is your usual expression when you meet a stranger for the first time?	:-)
Q7: How much time do you spend on social networking each day (wechat, qq, sms, skype, etc.)?	
(no label)	(no label)
Q8: How many hours of sleep do you get per night?	More than 8
Q9: Describe the quality of your sleep for the last 5 nights	I slept all night long without interruptions.
Q10: Do you agree with the following statement: Most people like me.	
(no label)	Strongly Agree
Q11: How would you describe the general attitude of the people around you?	
(no label)	Depressed

Q12: When other people around me are happy...	
(no label)	(no label)
Q13: How satisfied are you with your life right now/ (1=very unsatisfied; 10= very satisfied)	10
Q14: How long do you spend traveling to and from school most days?	More than 2 hours
Q15: How often do you daydream?	All the time
Q16: Do you agree with the following statement: I am usually able to have what I want.	Strongly Disagree
Q17: What is the most important factor for happiness?	Money
Q18: Male or Female	M
Q19: Grade Level	10
Q20: Homeroom	C

#3



COMPLETE

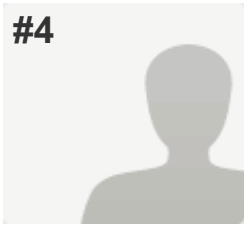
Collector: Web Link 1 (Web Link)
Started: Saturday, January 31, 2015 9:40:28 AM
Last Modified: Saturday, January 31, 2015 10:04:19 AM
Time Spent: 00:23:50
IP Address: 114.82.239.63

PAGE 1

Q1: How would you describe your relationship with your family?	Fairly Close
Q2: How comfortable are you with the people in your community? (1 = very uncomfortable; 5 = very comfortable)	
(no label)	2
Q3: How many friends could you call if you had a problem?	3-4
Q4: On average, how many hours do you spend on homework per week?	
(no label)	More than 20 hours
Q5: How often do you usually smile throughout the day?	Sometimes
Q6: What is your usual expression when you meet a stranger for the first time?	--V--
Q7: How much time do you spend on social networking each day (wechat, qq, sms, skype, etc.)?	
(no label)	30 minutes to an hour
Q8: How many hours of sleep do you get per night?	5-6
Q9: Describe the quality of your sleep for the last 5 nights	I didn't sleep very much
Q10: Do you agree with the following statement: Most people like me.	
(no label)	Disagree
Q11: How would you describe the general attitude of the people around you?	
(no label)	Depressed

Q12: When other people around me are happy... (no label)	I feel a little better.
Q13: How satisfied are you with your life right now/ (1=very unsatisfied; 10= very satisfied)	4
Q14: How long do you spend traveling to and from school most days?	Less than 20 minutes
Q15: How often do you daydream?	Sometimes
Q16: Do you agree with the following statement: I am usually able to have what I want.	Strongly Disagree
Q17: What is the most important factor for happiness?	you can get the life you want
Q18: Male or Female	male
Q19: Grade Level	11
Q20: Homeroom	11 Coyne

#4



COMPLETE

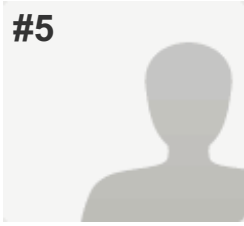
Collector: Web Link 1 (Web Link)
Started: Saturday, January 31, 2015 10:13:43 AM
Last Modified: Saturday, January 31, 2015 10:18:22 AM
Time Spent: 00:04:39
IP Address: 24.69.50.108

PAGE 1

Q1: How would you describe your relationship with your family?	Very Close
Q2: How comfortable are you with the people in your community? (1 = very uncomfortable; 5 = very comfortable)	
(no label)	4
Q3: How many friends could you call if you had a problem?	3-4
Q4: On average, how many hours do you spend on homework per week?	
(no label)	5-9 hours
Q5: How often do you usually smile throughout the day?	All the time
Q6: What is your usual expression when you meet a stranger for the first time?	:-)
Q7: How much time do you spend on social networking each day (wechat, qq, sms, skype, etc.)?	
(no label)	Less than 30 minutes
Q8: How many hours of sleep do you get per night?	5-6
Q9: Describe the quality of your sleep for the last 5 nights	I slept mostly all through the night.
Q10: Do you agree with the following statement: Most people like me.	
(no label)	Agree
Q11: How would you describe the general attitude of the people around you?	
(no label)	Friendly

Q12: When other people around me are happy... (no label)	I feel happier.
Q13: How satisfied are you with your life right now/ (1=very unsatisfied; 10= very satisfied)	9
Q14: How long do you spend traveling to and from school most days?	1 hour to 1 and a half hours
Q15: How often do you daydream?	All the time
Q16: Do you agree with the following statement: I am usually able to have what I want.	Disagree
Q17: What is the most important factor for happiness?	Finding something that makes YOU happy
Q18: Male or Female	Female
Q19: Grade Level	10
Q20: Homeroom	Ms. Habuchi

#5



COMPLETE

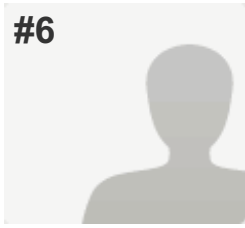
Collector: Web Link 1 (Web Link)
Started: Saturday, January 31, 2015 11:37:11 AM
Last Modified: Saturday, January 31, 2015 11:40:49 AM
Time Spent: 00:03:38
IP Address: 180.171.128.164

PAGE 1

Q1: How would you describe your relationship with your family?	Very Close
Q2: How comfortable are you with the people in your community? (1 = very uncomfortable; 5 = very comfortable)	
(no label)	5
Q3: How many friends could you call if you had a problem?	5 or more
Q4: On average, how many hours do you spend on homework per week?	
(no label)	More than 20 hours
Q5: How often do you usually smile throughout the day?	Sometimes
Q6: What is your usual expression when you meet a stranger for the first time?	:-)
Q7: How much time do you spend on social networking each day (wechat, qq, sms, skype, etc.)?	
(no label)	30 minutes to an hour
Q8: How many hours of sleep do you get per night?	5-6
Q9: Describe the quality of your sleep for the last 5 nights	I slept mostly all through the night.
Q10: Do you agree with the following statement: Most people like me.	
(no label)	Agree
Q11: How would you describe the general attitude of the people around you?	
(no label)	Friendly

Q12: When other people around me are happy... (no label)	I feel happier.
Q13: How satisfied are you with your life right now/ (1=very unsatisfied; 10= very satisfied)	8
Q14: How long do you spend traveling to and from school most days?	30 to 45 minutes
Q15: How often do you daydream?	All the time
Q16: Do you agree with the following statement: I am usually able to have what I want.	Agree
Q17: What is the most important factor for happiness?	Friends
Q18: Male or Female	Male
Q19: Grade Level	11
Q20: Homeroom	Coyen

#6



COMPLETE

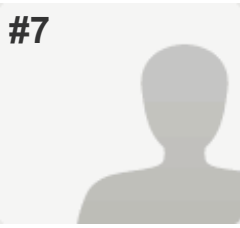
Collector: Web Link 1 (Web Link)
Started: Saturday, January 31, 2015 1:01:26 PM
Last Modified: Saturday, January 31, 2015 1:05:07 PM
Time Spent: 00:03:41
IP Address: 223.104.5.148

PAGE 1

Q1: How would you describe your relationship with your family?	Fairly Close
Q2: How comfortable are you with the people in your community? (1 = very uncomfortable; 5 = very comfortable)	
(no label)	5
Q3: How many friends could you call if you had a problem?	3-4
Q4: On average, how many hours do you spend on homework per week?	
(no label)	10-20 hours
Q5: How often do you usually smile throughout the day?	All the time
Q6: What is your usual expression when you meet a stranger for the first time?	:-)
Q7: How much time do you spend on social networking each day (wechat, qq, sms, skype, etc.)?	
(no label)	More than 2 hours
Q8: How many hours of sleep do you get per night?	5-6
Q9: Describe the quality of your sleep for the last 5 nights	I slept all night long without interruptions.
Q10: Do you agree with the following statement: Most people like me.	
(no label)	Agree
Q11: How would you describe the general attitude of the people around you?	
(no label)	Friendly

Q12: When other people around me are happy... (no label)	I feel happier.
Q13: How satisfied are you with your life right now/ (1=very unsatisfied; 10= very satisfied)	8
Q14: How long do you spend traveling to and from school most days?	30 to 45 minutes
Q15: How often do you daydream?	Sometimes
Q16: Do you agree with the following statement: I am usually able to have what I want.	Agree
Q17: What is the most important factor for happiness?	looking forward
Q18: Male or Female	Male
Q19: Grade Level	12
Q20: Homeroom	Cecil

#7



COMPLETE

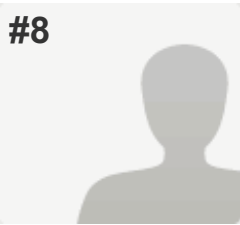
Collector: Web Link 1 (Web Link)
Started: Saturday, January 31, 2015 5:14:26 PM
Last Modified: Saturday, January 31, 2015 5:18:17 PM
Time Spent: 00:03:51
IP Address: 216.232.144.61

PAGE 1

Q1: How would you describe your relationship with your family?	Not Close, but we get along
Q2: How comfortable are you with the people in your community? (1 = very uncomfortable; 5 = very comfortable)	
(no label)	5
Q3: How many friends could you call if you had a problem?	1-2
Q4: On average, how many hours do you spend on homework per week?	
(no label)	Less than 1 hour
Q5: How often do you usually smile throughout the day?	Sometimes
Q6: What is your usual expression when you meet a stranger for the first time?	:-(
Q7: How much time do you spend on social networking each day (wechat, qq, sms, skype, etc.)?	
(no label)	More than 2 hours
Q8: How many hours of sleep do you get per night?	5-6
Q9: Describe the quality of your sleep for the last 5 nights	I slept mostly all through the night.
Q10: Do you agree with the following statement: Most people like me.	
(no label)	Disagree
Q11: How would you describe the general attitude of the people around you?	
(no label)	Depressed

Q12: When other people around me are happy... (no label)	I feel a little better.
Q13: How satisfied are you with your life right now/ (1=very unsatisfied; 10= very satisfied)	3
Q14: How long do you spend traveling to and from school most days?	Less than 20 minutes
Q15: How often do you daydream?	Sometimes
Q16: Do you agree with the following statement: I am usually able to have what I want.	Disagree
Q17: What is the most important factor for happiness?	Love
Q18: Male or Female	Female
Q19: Grade Level	10
Q20: Homeroom	Belic

#8



COMPLETE

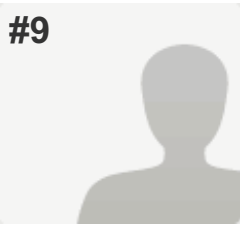
Collector: Web Link 1 (Web Link)
Started: Saturday, January 31, 2015 6:49:44 PM
Last Modified: Saturday, January 31, 2015 6:53:06 PM
Time Spent: 00:03:22
IP Address: 114.93.10.235

PAGE 1

Q1: How would you describe your relationship with your family?	I hate my family
Q2: How comfortable are you with the people in your community? (1 = very uncomfortable; 5 = very comfortable)	
(no label)	4
Q3: How many friends could you call if you had a problem?	5 or more
Q4: On average, how many hours do you spend on homework per week?	
(no label)	More than 20 hours
Q5: How often do you usually smile throughout the day?	Sometimes
Q6: What is your usual expression when you meet a stranger for the first time?	:-)
Q7: How much time do you spend on social networking each day (wechat, qq, sms, skype, etc.)?	
(no label)	1.5 to 2 hours
Q8: How many hours of sleep do you get per night?	5-6
Q9: Describe the quality of your sleep for the last 5 nights	I slept all night long without interruptions.
Q10: Do you agree with the following statement: Most people like me.	
(no label)	Disagree
Q11: How would you describe the general attitude of the people around you?	
(no label)	Negative

Q12: When other people around me are happy... (no label)	I feel even worse.
Q13: How satisfied are you with your life right now/ (1=very unsatisfied; 10= very satisfied)	6
Q14: How long do you spend traveling to and from school most days?	Less than 20 minutes
Q15: How often do you daydream?	Rarely
Q16: Do you agree with the following statement: I am usually able to have what I want.	Agree
Q17: What is the most important factor for happiness?	Natural environment
Q18: Male or Female	Female
Q19: Grade Level	11
Q20: Homeroom	<i>Respondent skipped this question</i>

#9



COMPLETE

Collector: Web Link 1 (Web Link)
Started: Saturday, January 31, 2015 7:05:31 PM
Last Modified: Saturday, January 31, 2015 7:08:38 PM
Time Spent: 00:03:07
IP Address: 112.225.39.242

PAGE 1

Q1: How would you describe your relationship with your family?	Very Close
Q2: How comfortable are you with the people in your community? (1 = very uncomfortable; 5 = very comfortable)	
(no label)	4
Q3: How many friends could you call if you had a problem?	3-4
Q4: On average, how many hours do you spend on homework per week?	
(no label)	10-20 hours
Q5: How often do you usually smile throughout the day?	All the time
Q6: What is your usual expression when you meet a stranger for the first time?	:-)
Q7: How much time do you spend on social networking each day (wechat, qq, sms, skype, etc.)?	
(no label)	30 minutes to an hour
Q8: How many hours of sleep do you get per night?	More than 8
Q9: Describe the quality of your sleep for the last 5 nights	I slept all night long without interruptions.
Q10: Do you agree with the following statement: Most people like me.	
(no label)	Agree
Q11: How would you describe the general attitude of the people around you?	
(no label)	Friendly

Q12: When other people around me are happy... (no label)	I feel happier.
Q13: How satisfied are you with your life right now/ (1=very unsatisfied; 10= very satisfied)	10
Q14: How long do you spend traveling to and from school most days?	Less than 20 minutes
Q15: How often do you daydream?	Rarely
Q16: Do you agree with the following statement: I am usually able to have what I want.	Strongly Agree
Q17: What is the most important factor for happiness?	Do what I like
Q18: Male or Female	F
Q19: Grade Level	11
Q20: Homeroom	11 conye

#10



COMPLETE

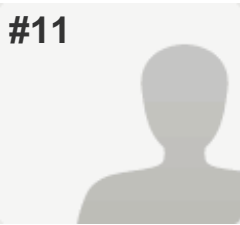
Collector: Web Link 1 (Web Link)
Started: Saturday, January 31, 2015 6:59:12 PM
Last Modified: Saturday, January 31, 2015 7:13:31 PM
Time Spent: 00:14:18
IP Address: 174.0.42.12

PAGE 1

Q1: How would you describe your relationship with your family?	Fairly Close
Q2: How comfortable are you with the people in your community? (1 = very uncomfortable; 5 = very comfortable)	
(no label)	5
Q3: How many friends could you call if you had a problem?	3-4
Q4: On average, how many hours do you spend on homework per week?	
(no label)	2-4 hours
Q5: How often do you usually smile throughout the day?	Sometimes
Q6: What is your usual expression when you meet a stranger for the first time?	--V--
Q7: How much time do you spend on social networking each day (wechat, qq, sms, skype, etc.)?	
(no label)	1.5 to 2 hours
Q8: How many hours of sleep do you get per night?	5-6
Q9: Describe the quality of your sleep for the last 5 nights	I slept all night long without interruptions.
Q10: Do you agree with the following statement: Most people like me.	
(no label)	Agree
Q11: How would you describe the general attitude of the people around you?	
(no label)	Friendly

Q12: When other people around me are happy... (no label)	I feel happier.
Q13: How satisfied are you with your life right now/ (1=very unsatisfied; 10= very satisfied)	5
Q14: How long do you spend traveling to and from school most days?	30 to 45 minutes
Q15: How often do you daydream?	Sometimes
Q16: Do you agree with the following statement: I am usually able to have what I want.	Agree
Q17: What is the most important factor for happiness?	smile
Q18: Male or Female	female
Q19: Grade Level	11
Q20: Homeroom	<i>Respondent skipped this question</i>

#11



COMPLETE

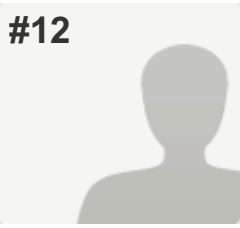
Collector: Web Link 1 (Web Link)
Started: Saturday, January 31, 2015 10:00:41 PM
Last Modified: Saturday, January 31, 2015 10:05:38 PM
Time Spent: 00:04:57
IP Address: 124.79.209.38

PAGE 1

Q1: How would you describe your relationship with your family?	Very Close
Q2: How comfortable are you with the people in your community? (1 = very uncomfortable; 5 = very comfortable)	
(no label)	3
Q3: How many friends could you call if you had a problem?	3-4
Q4: On average, how many hours do you spend on homework per week?	
(no label)	10-20 hours
Q5: How often do you usually smile throughout the day?	All the time
Q6: What is your usual expression when you meet a stranger for the first time?	:-)
Q7: How much time do you spend on social networking each day (wechat, qq, sms, skype, etc.)?	
(no label)	Less than 30 minutes
Q8: How many hours of sleep do you get per night?	7-8
Q9: Describe the quality of your sleep for the last 5 nights	I slept all night long without interruptions.
Q10: Do you agree with the following statement: Most people like me.	
(no label)	Strongly Agree
Q11: How would you describe the general attitude of the people around you?	
(no label)	Friendly

Q12: When other people around me are happy... (no label)	I feel a little better.
Q13: How satisfied are you with your life right now/ (1=very unsatisfied; 10= very satisfied)	8
Q14: How long do you spend traveling to and from school most days?	Less than 20 minutes
Q15: How often do you daydream?	Sometimes
Q16: Do you agree with the following statement: I am usually able to have what I want.	Agree
Q17: What is the most important factor for happiness?	Good relationship with other people
Q18: Male or Female	female
Q19: Grade Level	11
Q20: Homeroom	11b

#12



COMPLETE

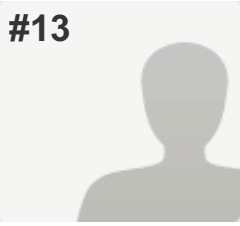
Collector: Web Link 1 (Web Link)
Started: Saturday, January 31, 2015 11:47:14 PM
Last Modified: Saturday, January 31, 2015 11:52:06 PM
Time Spent: 00:04:52
IP Address: 140.206.88.207

PAGE 1

Q1: How would you describe your relationship with your family?	Fairly Close
Q2: How comfortable are you with the people in your community? (1 = very uncomfortable; 5 = very comfortable)	
(no label)	4
Q3: How many friends could you call if you had a problem?	1-2
Q4: On average, how many hours do you spend on homework per week?	
(no label)	10-20 hours
Q5: How often do you usually smile throughout the day?	Sometimes
Q6: What is your usual expression when you meet a stranger for the first time?	:-)
Q7: How much time do you spend on social networking each day (wechat, qq, sms, skype, etc.)?	
(no label)	1.5 to 2 hours
Q8: How many hours of sleep do you get per night?	7-8
Q9: Describe the quality of your sleep for the last 5 nights	I slept all night long without interruptions.
Q10: Do you agree with the following statement: Most people like me.	
(no label)	Strongly Agree
Q11: How would you describe the general attitude of the people around you?	
(no label)	Friendly

Q12: When other people around me are happy... (no label)	I feel happier.
Q13: How satisfied are you with your life right now/ (1=very unsatisfied; 10= very satisfied)	9
Q14: How long do you spend traveling to and from school most days?	Less than 20 minutes
Q15: How often do you daydream?	Rarely
Q16: Do you agree with the following statement: I am usually able to have what I want.	Agree
Q17: What is the most important factor for happiness?	To love some one and be loved by the one.
Q18: Male or Female	Male
Q19: Grade Level	10
Q20: Homeroom	Wilkes

#13



COMPLETE

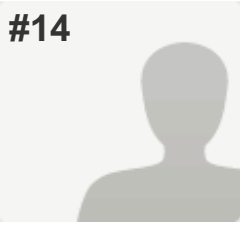
Collector: Web Link 1 (Web Link)
Started: Saturday, January 31, 2015 11:46:56 PM
Last Modified: Saturday, January 31, 2015 11:57:15 PM
Time Spent: 00:10:18
IP Address: 115.205.239.45

PAGE 1

Q1: How would you describe your relationship with your family?	Very Close
Q2: How comfortable are you with the people in your community? (1 = very uncomfortable; 5 = very comfortable)	
(no label)	4
Q3: How many friends could you call if you had a problem?	3-4
Q4: On average, how many hours do you spend on homework per week?	
(no label)	10-20 hours
Q5: How often do you usually smile throughout the day?	All the time
Q6: What is your usual expression when you meet a stranger for the first time?	:-)
Q7: How much time do you spend on social networking each day (wechat, qq, sms, skype, etc.)?	
(no label)	30 minutes to an hour
Q8: How many hours of sleep do you get per night?	5-6
Q9: Describe the quality of your sleep for the last 5 nights	I slept all night long without interruptions.
Q10: Do you agree with the following statement: Most people like me.	
(no label)	Agree
Q11: How would you describe the general attitude of the people around you?	
(no label)	Friendly

Q12: When other people around me are happy... (no label)	I feel a little better.
Q13: How satisfied are you with your life right now/ (1=very unsatisfied; 10= very satisfied)	6
Q14: How long do you spend traveling to and from school most days?	Less than 20 minutes
Q15: How often do you daydream?	Sometimes
Q16: Do you agree with the following statement: I am usually able to have what I want.	Agree
Q17: What is the most important factor for happiness?	LOVE
Q18: Male or Female	female
Q19: Grade Level	11
Q20: Homeroom	11A

#14

**COMPLETE****Collector:** Web Link 1 (Web Link)**Started:** Sunday, February 01, 2015 12:16:34 AM**Last Modified:** Sunday, February 01, 2015 12:19:13 AM**Time Spent:** 00:02:38**IP Address:** 117.136.8.203

PAGE 1

Q1: How would you describe your relationship with your family? Very Close

Q2: How comfortable are you with the people in your community? (1 = very uncomfortable; 5 = very comfortable)

(no label) 4

Q3: How many friends could you call if you had a problem? 1-2

Q4: On average, how many hours do you spend on homework per week?

(no label) 2-4 hours

Q5: How often do you usually smile throughout the day? All the time

Q6: What is your usual expression when you meet a stranger for the first time? :-)

Q7: How much time do you spend on social networking each day (wechat, qq, sms, skype, etc.)?

(no label) 30 minutes to an hour

Q8: How many hours of sleep do you get per night? 7-8

Q9: Describe the quality of your sleep for the last 5 nights I slept all night long without interruptions.

Q10: Do you agree with the following statement: Most people like me.

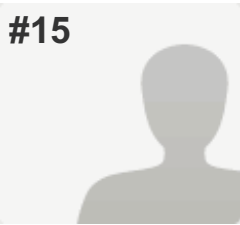
(no label) Agree

Q11: How would you describe the general attitude of the people around you?

(no label) Friendly

Q12: When other people around me are happy... (no label)	I am not affected.
Q13: How satisfied are you with your life right now/ (1=very unsatisfied; 10= very satisfied)	9
Q14: How long do you spend traveling to and from school most days?	Less than 20 minutes
Q15: How often do you daydream?	All the time
Q16: Do you agree with the following statement: I am usually able to have what I want.	Agree
Q17: What is the most important factor for happiness?	self attitude
Q18: Male or Female	Female
Q19: Grade Level	12
Q20: Homeroom	12A

#15



COMPLETE

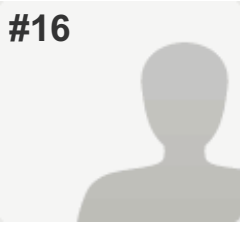
Collector: Web Link 1 (Web Link)
Started: Sunday, February 01, 2015 1:55:44 AM
Last Modified: Sunday, February 01, 2015 2:08:06 AM
Time Spent: 00:12:21
IP Address: 180.171.150.144

PAGE 1

Q1: How would you describe your relationship with your family?	Very Close
Q2: How comfortable are you with the people in your community? (1 = very uncomfortable; 5 = very comfortable)	
(no label)	4
Q3: How many friends could you call if you had a problem?	3-4
Q4: On average, how many hours do you spend on homework per week?	
(no label)	10-20 hours
Q5: How often do you usually smile throughout the day?	Sometimes
Q6: What is your usual expression when you meet a stranger for the first time?	--V--
Q7: How much time do you spend on social networking each day (wechat, qq, sms, skype, etc.)?	
(no label)	Less than 30 minutes
Q8: How many hours of sleep do you get per night?	7-8
Q9: Describe the quality of your sleep for the last 5 nights	I slept mostly all through the night.
Q10: Do you agree with the following statement: Most people like me.	
(no label)	Agree
Q11: How would you describe the general attitude of the people around you?	
(no label)	Friendly

Q12: When other people around me are happy... (no label)	I am not affected.
Q13: How satisfied are you with your life right now/ (1=very unsatisfied; 10= very satisfied)	8
Q14: How long do you spend traveling to and from school most days?	Less than 20 minutes
Q15: How often do you daydream?	Rarely
Q16: Do you agree with the following statement: I am usually able to have what I want.	Agree
Q17: What is the most important factor for happiness?	Faith
Q18: Male or Female	Male
Q19: Grade Level	10
Q20: Homeroom	White

#16



COMPLETE

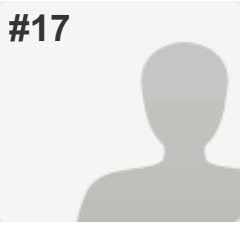
Collector: Web Link 1 (Web Link)
Started: Sunday, February 01, 2015 7:31:39 AM
Last Modified: Sunday, February 01, 2015 7:34:29 AM
Time Spent: 00:02:50
IP Address: 114.93.58.23

PAGE 1

Q1: How would you describe your relationship with your family?	I hate my family
Q2: How comfortable are you with the people in your community? (1 = very uncomfortable; 5 = very comfortable)	
(no label)	5
Q3: How many friends could you call if you had a problem?	5 or more
Q4: On average, how many hours do you spend on homework per week?	
(no label)	More than 20 hours
Q5: How often do you usually smile throughout the day?	Never
Q6: What is your usual expression when you meet a stranger for the first time?	--V--
Q7: How much time do you spend on social networking each day (wechat, qq, sms, skype, etc.)?	
(no label)	More than 2 hours
Q8: How many hours of sleep do you get per night?	5-6
Q9: Describe the quality of your sleep for the last 5 nights	I slept mostly all through the night.
Q10: Do you agree with the following statement: Most people like me.	
(no label)	Strongly Agree
Q11: How would you describe the general attitude of the people around you?	
(no label)	Friendly

Q12: When other people around me are happy... (no label)	I am not affected.
Q13: How satisfied are you with your life right now/ (1=very unsatisfied; 10= very satisfied)	1
Q14: How long do you spend traveling to and from school most days?	30 to 45 minutes
Q15: How often do you daydream?	Never
Q16: Do you agree with the following statement: I am usually able to have what I want.	Strongly Agree
Q17: What is the most important factor for happiness?	Life
Q18: Male or Female	Guess what
Q19: Grade Level	11
Q20: Homeroom	A

#17



COMPLETE

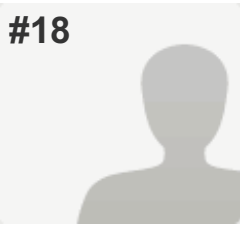
Collector: Web Link 1 (Web Link)
Started: Sunday, February 01, 2015 3:52:38 PM
Last Modified: Sunday, February 01, 2015 3:55:33 PM
Time Spent: 00:02:55
IP Address: 180.173.106.207

PAGE 1

Q1: How would you describe your relationship with your family?	Very Close
Q2: How comfortable are you with the people in your community? (1 = very uncomfortable; 5 = very comfortable)	
(no label)	3
Q3: How many friends could you call if you had a problem?	1-2
Q4: On average, how many hours do you spend on homework per week?	
(no label)	10-20 hours
Q5: How often do you usually smile throughout the day?	Sometimes
Q6: What is your usual expression when you meet a stranger for the first time?	:-)
Q7: How much time do you spend on social networking each day (wechat, qq, sms, skype, etc.)?	
(no label)	30 minutes to an hour
Q8: How many hours of sleep do you get per night?	5-6
Q9: Describe the quality of your sleep for the last 5 nights	I slept mostly all through the night.
Q10: Do you agree with the following statement: Most people like me.	
(no label)	Agree
Q11: How would you describe the general attitude of the people around you?	
(no label)	Friendly

Q12: When other people around me are happy... (no label)	I feel a little better.
Q13: How satisfied are you with your life right now/ (1=very unsatisfied; 10= very satisfied)	5
Q14: How long do you spend traveling to and from school most days?	1 hour to 1 and a half hours
Q15: How often do you daydream?	Sometimes
Q16: Do you agree with the following statement: I am usually able to have what I want.	Agree
Q17: What is the most important factor for happiness?	Be satisfy with what you have
Q18: Male or Female	Female
Q19: Grade Level	9
Q20: Homeroom	Koopman

#18



COMPLETE

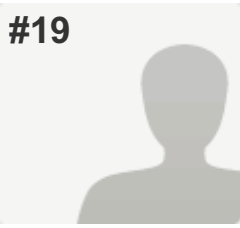
Collector: Web Link 1 (Web Link)
Started: Sunday, February 01, 2015 3:55:21 PM
Last Modified: Sunday, February 01, 2015 3:58:26 PM
Time Spent: 00:03:04
IP Address: 202.158.164.42

PAGE 1

Q1: How would you describe your relationship with your family?	Fairly Close
Q2: How comfortable are you with the people in your community? (1 = very uncomfortable; 5 = very comfortable)	
(no label)	5
Q3: How many friends could you call if you had a problem?	5 or more
Q4: On average, how many hours do you spend on homework per week?	
(no label)	2-4 hours
Q5: How often do you usually smile throughout the day?	Sometimes
Q6: What is your usual expression when you meet a stranger for the first time?	--V--
Q7: How much time do you spend on social networking each day (wechat, qq, sms, skype, etc.)?	
(no label)	1.5 to 2 hours
Q8: How many hours of sleep do you get per night?	5-6
Q9: Describe the quality of your sleep for the last 5 nights	I didn't sleep very much
Q10: Do you agree with the following statement: Most people like me.	
(no label)	Disagree
Q11: How would you describe the general attitude of the people around you?	
(no label)	Friendly

Q12: When other people around me are happy... (no label)	I feel a little better.
Q13: How satisfied are you with your life right now/ (1=very unsatisfied; 10= very satisfied)	8
Q14: How long do you spend traveling to and from school most days?	Less than 20 minutes
Q15: How often do you daydream?	All the time
Q16: Do you agree with the following statement: I am usually able to have what I want.	Agree
Q17: What is the most important factor for happiness?	soccer
Q18: Male or Female	male
Q19: Grade Level	9
Q20: Homeroom	9c c401

#19



COMPLETE

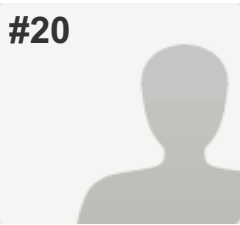
Collector: Web Link 1 (Web Link)
Started: Sunday, February 01, 2015 3:54:29 PM
Last Modified: Sunday, February 01, 2015 3:58:46 PM
Time Spent: 00:04:16
IP Address: 180.173.106.207

PAGE 1

Q1: How would you describe your relationship with your family?	Very Close
Q2: How comfortable are you with the people in your community? (1 = very uncomfortable; 5 = very comfortable)	
(no label)	5
Q3: How many friends could you call if you had a problem?	3-4
Q4: On average, how many hours do you spend on homework per week?	
(no label)	2-4 hours
Q5: How often do you usually smile throughout the day?	Never
Q6: What is your usual expression when you meet a stranger for the first time?	:-)
Q7: How much time do you spend on social networking each day (wechat, qq, sms, skype, etc.)?	
(no label)	More than 2 hours
Q8: How many hours of sleep do you get per night?	5-6
Q9: Describe the quality of your sleep for the last 5 nights	I slept all night long without interruptions.
Q10: Do you agree with the following statement: Most people like me.	
(no label)	Disagree
Q11: How would you describe the general attitude of the people around you?	
(no label)	Friendly

Q12: When other people around me are happy... (no label)	I am not affected.
Q13: How satisfied are you with your life right now/ (1=very unsatisfied; 10= very satisfied)	7
Q14: How long do you spend traveling to and from school most days?	1 hour to 1 and a half hours
Q15: How often do you daydream?	Sometimes
Q16: Do you agree with the following statement: I am usually able to have what I want.	Agree
Q17: What is the most important factor for happiness?	<i>Respondent skipped this question</i>
Q18: Male or Female	Female
Q19: Grade Level	11
Q20: Homeroom	Coyne

#20



COMPLETE

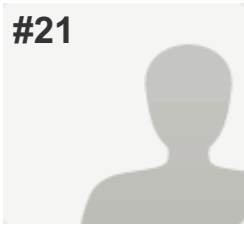
Collector: Web Link 1 (Web Link)
Started: Sunday, February 01, 2015 3:56:01 PM
Last Modified: Sunday, February 01, 2015 3:59:26 PM
Time Spent: 00:03:25
IP Address: 180.173.106.207

PAGE 1

Q1: How would you describe your relationship with your family?	Very Close
Q2: How comfortable are you with the people in your community? (1 = very uncomfortable; 5 = very comfortable)	
(no label)	5
Q3: How many friends could you call if you had a problem?	5 or more
Q4: On average, how many hours do you spend on homework per week?	
(no label)	5-9 hours
Q5: How often do you usually smile throughout the day?	All the time
Q6: What is your usual expression when you meet a stranger for the first time?	--V--
Q7: How much time do you spend on social networking each day (wechat, qq, sms, skype, etc.)?	
(no label)	30 minutes to an hour
Q8: How many hours of sleep do you get per night?	7-8
Q9: Describe the quality of your sleep for the last 5 nights	I slept all night long without interruptions.
Q10: Do you agree with the following statement: Most people like me.	
(no label)	Agree
Q11: How would you describe the general attitude of the people around you?	
(no label)	Friendly

Q12: When other people around me are happy... (no label)	I feel happier.
Q13: How satisfied are you with your life right now/ (1=very unsatisfied; 10= very satisfied)	10
Q14: How long do you spend traveling to and from school most days?	Less than 20 minutes
Q15: How often do you daydream?	Rarely
Q16: Do you agree with the following statement: I am usually able to have what I want.	Disagree
Q17: What is the most important factor for happiness?	Have a good girlfriend
Q18: Male or Female	Male
Q19: Grade Level	9
Q20: Homeroom	C401

#21



COMPLETE

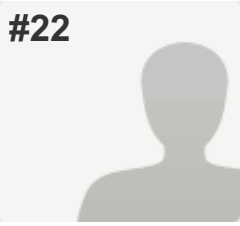
Collector: Web Link 1 (Web Link)
Started: Sunday, February 01, 2015 3:57:25 PM
Last Modified: Sunday, February 01, 2015 4:00:33 PM
Time Spent: 00:03:08
IP Address: 180.173.106.207

PAGE 1

Q1: How would you describe your relationship with your family?	Very Close
Q2: How comfortable are you with the people in your community? (1 = very uncomfortable; 5 = very comfortable)	
(no label)	5
Q3: How many friends could you call if you had a problem?	5 or more
Q4: On average, how many hours do you spend on homework per week?	
(no label)	10-20 hours
Q5: How often do you usually smile throughout the day?	All the time
Q6: What is your usual expression when you meet a stranger for the first time?	TVT
Q7: How much time do you spend on social networking each day (wechat, qq, sms, skype, etc.)?	
(no label)	30 minutes to an hour
Q8: How many hours of sleep do you get per night?	7-8
Q9: Describe the quality of your sleep for the last 5 nights	I didn't sleep very much
Q10: Do you agree with the following statement: Most people like me.	
(no label)	Agree
Q11: How would you describe the general attitude of the people around you?	
(no label)	Friendly

Q12: When other people around me are happy... (no label)	I feel a little better.
Q13: How satisfied are you with your life right now/ (1=very unsatisfied; 10= very satisfied)	9
Q14: How long do you spend traveling to and from school most days?	30 to 45 minutes
Q15: How often do you daydream?	Sometimes
Q16: Do you agree with the following statement: I am usually able to have what I want.	Agree
Q17: What is the most important factor for happiness?	Homework
Q18: Male or Female	M
Q19: Grade Level	9
Q20: Homeroom	C401

#22



COMPLETE

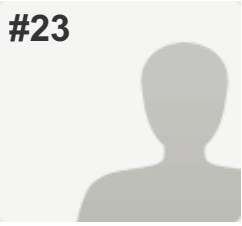
Collector: Web Link 1 (Web Link)
Started: Sunday, February 01, 2015 3:56:24 PM
Last Modified: Sunday, February 01, 2015 4:01:01 PM
Time Spent: 00:04:36
IP Address: 202.158.164.42

PAGE 1

Q1: How would you describe your relationship with your family?	Very Close
Q2: How comfortable are you with the people in your community? (1 = very uncomfortable; 5 = very comfortable)	
(no label)	4
Q3: How many friends could you call if you had a problem?	5 or more
Q4: On average, how many hours do you spend on homework per week?	
(no label)	2-4 hours
Q5: How often do you usually smile throughout the day?	Sometimes
Q6: What is your usual expression when you meet a stranger for the first time?	:-(
Q7: How much time do you spend on social networking each day (wechat, qq, sms, skype, etc.)?	
(no label)	30 minutes to an hour
Q8: How many hours of sleep do you get per night?	More than 8
Q9: Describe the quality of your sleep for the last 5 nights	I slept mostly all through the night.
Q10: Do you agree with the following statement: Most people like me.	
(no label)	Agree
Q11: How would you describe the general attitude of the people around you?	
(no label)	Friendly

Q12: When other people around me are happy... (no label)	I feel happier.
Q13: How satisfied are you with your life right now/ (1=very unsatisfied; 10= very satisfied)	9
Q14: How long do you spend traveling to and from school most days?	Less than 20 minutes
Q15: How often do you daydream?	Sometimes
Q16: Do you agree with the following statement: I am usually able to have what I want.	Disagree
Q17: What is the most important factor for happiness?	do the things that we are interested in
Q18: Male or Female	male
Q19: Grade Level	9
Q20: Homeroom	c401

#23

**COMPLETE****Collector:** Web Link 1 (Web Link)**Started:** Sunday, February 01, 2015 3:57:47 PM**Last Modified:** Sunday, February 01, 2015 4:01:01 PM**Time Spent:** 00:03:14**IP Address:** 180.173.106.207

PAGE 1

Q1: How would you describe your relationship with your family? Very Close

Q2: How comfortable are you with the people in your community? (1 = very uncomfortable; 5 = very comfortable)

(no label) 3

Q3: How many friends could you call if you had a problem? 3-4

Q4: On average, how many hours do you spend on homework per week?

(no label) 5-9 hours

Q5: How often do you usually smile throughout the day? Sometimes

Q6: What is your usual expression when you meet a stranger for the first time? :-)

Q7: How much time do you spend on social networking each day (wechat, qq, sms, skype, etc.)?

(no label) 30 minutes to an hour

Q8: How many hours of sleep do you get per night? 5-6

Q9: Describe the quality of your sleep for the last 5 nights I slept mostly all through the night.

Q10: Do you agree with the following statement: Most people like me.

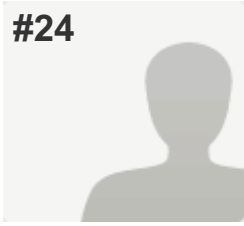
(no label) Disagree

Q11: How would you describe the general attitude of the people around you?

(no label) Friendly

Q12: When other people around me are happy... (no label)	I feel happier.
Q13: How satisfied are you with your life right now/ (1=very unsatisfied; 10= very satisfied)	4
Q14: How long do you spend traveling to and from school most days?	Less than 20 minutes
Q15: How often do you daydream?	Sometimes
Q16: Do you agree with the following statement: I am usually able to have what I want.	Disagree
Q17: What is the most important factor for happiness?	A good mood
Q18: Male or Female	Female
Q19: Grade Level	Grade 9
Q20: Homeroom	C401

#24



COMPLETE

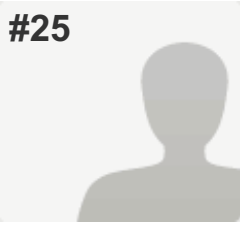
Collector: Web Link 1 (Web Link)
Started: Sunday, February 01, 2015 4:35:00 PM
Last Modified: Sunday, February 01, 2015 4:36:56 PM
Time Spent: 00:01:56
IP Address: 103.29.140.254

PAGE 1

Q1: How would you describe your relationship with your family?	Very Close
Q2: How comfortable are you with the people in your community? (1 = very uncomfortable; 5 = very comfortable)	
(no label)	4
Q3: How many friends could you call if you had a problem?	3-4
Q4: On average, how many hours do you spend on homework per week?	
(no label)	5-9 hours
Q5: How often do you usually smile throughout the day?	All the time
Q6: What is your usual expression when you meet a stranger for the first time?	:-)
Q7: How much time do you spend on social networking each day (wechat, qq, sms, skype, etc.)?	
(no label)	1.5 to 2 hours
Q8: How many hours of sleep do you get per night?	7-8
Q9: Describe the quality of your sleep for the last 5 nights	I slept mostly all through the night.
Q10: Do you agree with the following statement: Most people like me.	
(no label)	Agree
Q11: How would you describe the general attitude of the people around you?	
(no label)	Friendly

Q12: When other people around me are happy... (no label)	I feel happier.
Q13: How satisfied are you with your life right now/ (1=very unsatisfied; 10= very satisfied)	9
Q14: How long do you spend traveling to and from school most days?	Less than 20 minutes
Q15: How often do you daydream?	Sometimes
Q16: Do you agree with the following statement: I am usually able to have what I want.	Agree
Q17: What is the most important factor for happiness?	<i>Respondent skipped this question</i>
Q18: Male or Female	<i>Respondent skipped this question</i>
Q19: Grade Level	<i>Respondent skipped this question</i>
Q20: Homeroom	<i>Respondent skipped this question</i>

#25



COMPLETE

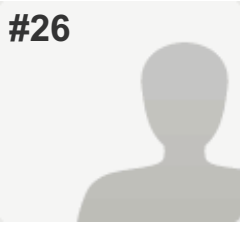
Collector: Web Link 1 (Web Link)
Started: Sunday, February 01, 2015 3:59:27 PM
Last Modified: Sunday, February 01, 2015 4:51:49 PM
Time Spent: 00:52:22
IP Address: 180.173.106.207

PAGE 1

Q1: How would you describe your relationship with your family?	Very Close
Q2: How comfortable are you with the people in your community? (1 = very uncomfortable; 5 = very comfortable)	
(no label)	4
Q3: How many friends could you call if you had a problem?	1-2
Q4: On average, how many hours do you spend on homework per week?	
(no label)	10-20 hours
Q5: How often do you usually smile throughout the day?	All the time
Q6: What is your usual expression when you meet a stranger for the first time?	--V--
Q7: How much time do you spend on social networking each day (wechat, qq, sms, skype, etc.)?	
(no label)	30 minutes to an hour
Q8: How many hours of sleep do you get per night?	7-8
Q9: Describe the quality of your sleep for the last 5 nights	I slept mostly all through the night.
Q10: Do you agree with the following statement: Most people like me.	
(no label)	Strongly Agree
Q11: How would you describe the general attitude of the people around you?	
(no label)	Friendly

Q12: When other people around me are happy... (no label)	I feel happier.
Q13: How satisfied are you with your life right now/ (1=very unsatisfied; 10= very satisfied)	9
Q14: How long do you spend traveling to and from school most days?	Less than 20 minutes
Q15: How often do you daydream?	Never
Q16: Do you agree with the following statement: I am usually able to have what I want.	Disagree
Q17: What is the most important factor for happiness?	Playing basketball
Q18: Male or Female	male
Q19: Grade Level	9
Q20: Homeroom	C401

#26



COMPLETE

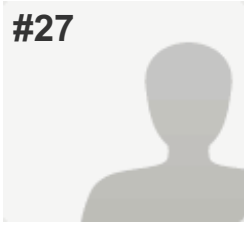
Collector: Web Link 1 (Web Link)
Started: Sunday, February 01, 2015 3:59:29 PM
Last Modified: Sunday, February 01, 2015 4:56:12 PM
Time Spent: 00:56:43
IP Address: 180.173.106.207

PAGE 1

Q1: How would you describe your relationship with your family?	Very Close
Q2: How comfortable are you with the people in your community? (1 = very uncomfortable; 5 = very comfortable)	
(no label)	5
Q3: How many friends could you call if you had a problem?	3-4
Q4: On average, how many hours do you spend on homework per week?	
(no label)	Less than 1 hour
Q5: How often do you usually smile throughout the day?	All the time
Q6: What is your usual expression when you meet a stranger for the first time?	TVT
Q7: How much time do you spend on social networking each day (wechat, qq, sms, skype, etc.)?	<i>Respondent skipped this question</i>
Q8: How many hours of sleep do you get per night?	<i>Respondent skipped this question</i>
Q9: Describe the quality of your sleep for the last 5 nights	<i>Respondent skipped this question</i>
Q10: Do you agree with the following statement: Most people like me.	<i>Respondent skipped this question</i>
Q11: How would you describe the general attitude of the people around you?	<i>Respondent skipped this question</i>
Q12: When other people around me are happy...	<i>Respondent skipped this question</i>

Q13: How satisfied are you with your life right now/ (1=very unsatisfied; 10= very satisfied)	<i>Respondent skipped this question</i>
Q14: How long do you spend traveling to and from school most days?	<i>Respondent skipped this question</i>
Q15: How often do you daydream?	<i>Respondent skipped this question</i>
Q16: Do you agree with the following statement: I am usually able to have what I want.	<i>Respondent skipped this question</i>
Q17: What is the most important factor for happiness?	<i>Respondent skipped this question</i>
Q18: Male or Female	<i>Respondent skipped this question</i>
Q19: Grade Level	<i>Respondent skipped this question</i>
Q20: Homeroom	<i>Respondent skipped this question</i>

#27



COMPLETE

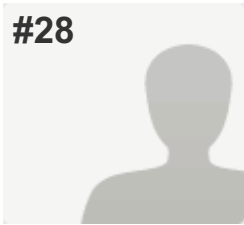
Collector: Web Link 1 (Web Link)
Started: Sunday, February 01, 2015 3:58:37 PM
Last Modified: Sunday, February 01, 2015 4:59:30 PM
Time Spent: 01:00:52
IP Address: 180.173.106.207

PAGE 1

Q1: How would you describe your relationship with your family?	Fairly Close
Q2: How comfortable are you with the people in your community? (1 = very uncomfortable; 5 = very comfortable)	
(no label)	4
Q3: How many friends could you call if you had a problem?	1-2
Q4: On average, how many hours do you spend on homework per week?	
(no label)	2-4 hours
Q5: How often do you usually smile throughout the day?	Rarely
Q6: What is your usual expression when you meet a stranger for the first time?	TVT
Q7: How much time do you spend on social networking each day (wechat, qq, sms, skype, etc.)?	
(no label)	30 minutes to an hour
Q8: How many hours of sleep do you get per night?	7-8
Q9: Describe the quality of your sleep for the last 5 nights	I didn't sleep very much
Q10: Do you agree with the following statement: Most people like me.	
(no label)	Agree
Q11: How would you describe the general attitude of the people around you?	
(no label)	Friendly

Q12: When other people around me are happy... (no label)	I feel happier.
Q13: How satisfied are you with your life right now/ (1=very unsatisfied; 10= very satisfied)	9
Q14: How long do you spend traveling to and from school most days?	30 to 45 minutes
Q15: How often do you daydream?	Rarely
Q16: Do you agree with the following statement: I am usually able to have what I want.	Agree
Q17: What is the most important factor for happiness?	do the thing i like
Q18: Male or Female	female
Q19: Grade Level	9
Q20: Homeroom	c401

#28



COMPLETE

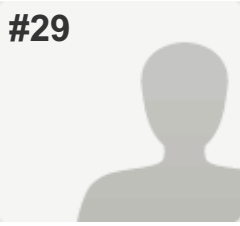
Collector: Web Link 1 (Web Link)
Started: Sunday, February 01, 2015 3:58:11 PM
Last Modified: Sunday, February 01, 2015 5:05:00 PM
Time Spent: 01:06:49
IP Address: 180.173.106.207

PAGE 1

Q1: How would you describe your relationship with your family?	Very Close
Q2: How comfortable are you with the people in your community? (1 = very uncomfortable; 5 = very comfortable)	
(no label)	5
Q3: How many friends could you call if you had a problem?	3-4
Q4: On average, how many hours do you spend on homework per week?	
(no label)	2-4 hours
Q5: How often do you usually smile throughout the day?	All the time
Q6: What is your usual expression when you meet a stranger for the first time?	--V--
Q7: How much time do you spend on social networking each day (wechat, qq, sms, skype, etc.)?	
(no label)	30 minutes to an hour
Q8: How many hours of sleep do you get per night?	7-8
Q9: Describe the quality of your sleep for the last 5 nights	I slept all night long without interruptions.
Q10: Do you agree with the following statement: Most people like me.	
(no label)	Agree
Q11: How would you describe the general attitude of the people around you?	
(no label)	Friendly

Q12: When other people around me are happy... (no label)	I feel happier.
Q13: How satisfied are you with your life right now/ (1=very unsatisfied; 10= very satisfied)	10
Q14: How long do you spend traveling to and from school most days?	Less than 20 minutes
Q15: How often do you daydream?	Rarely
Q16: Do you agree with the following statement: I am usually able to have what I want.	Agree
Q17: What is the most important factor for happiness?	contentment
Q18: Male or Female	female
Q19: Grade Level	G9
Q20: Homeroom	Mr.Koopman

#29

**COMPLETE****Collector:** Web Link 1 (Web Link)**Started:** Sunday, February 01, 2015 5:33:44 PM**Last Modified:** Sunday, February 01, 2015 5:44:37 PM**Time Spent:** 00:10:52**IP Address:** 180.173.106.207

PAGE 1

Q1: How would you describe your relationship with your family? Not Close, but we get along

Q2: How comfortable are you with the people in your community? (1 = very uncomfortable; 5 = very comfortable)

(no label) 3

Q3: How many friends could you call if you had a problem? 3-4

Q4: On average, how many hours do you spend on homework per week?

(no label) 2-4 hours

Q5: How often do you usually smile throughout the day? Sometimes

Q6: What is your usual expression when you meet a stranger for the first time? :-)

Q7: How much time do you spend on social networking each day (wechat, qq, sms, skype, etc.)?

(no label) 30 minutes to an hour

Q8: How many hours of sleep do you get per night? 5-6

Q9: Describe the quality of your sleep for the last 5 nights I didn't sleep very much

Q10: Do you agree with the following statement: Most people like me.

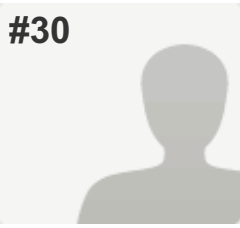
(no label) Disagree

Q11: How would you describe the general attitude of the people around you?

(no label) Negative

Q12: When other people around me are happy... (no label)	I am not affected.
Q13: How satisfied are you with your life right now/ (1=very unsatisfied; 10= very satisfied)	5
Q14: How long do you spend traveling to and from school most days?	Less than 20 minutes
Q15: How often do you daydream?	Rarely
Q16: Do you agree with the following statement: I am usually able to have what I want.	Agree
Q17: What is the most important factor for happiness?	sleep
Q18: Male or Female	female
Q19: Grade Level	9
Q20: Homeroom	c401

#30

**COMPLETE****Collector:** Web Link 1 (Web Link)**Started:** Sunday, February 01, 2015 3:59:27 PM**Last Modified:** Sunday, February 01, 2015 5:47:00 PM**Time Spent:** 01:47:32**IP Address:** 180.173.106.207

PAGE 1

Q1: How would you describe your relationship with your family? Very Close

Q2: How comfortable are you with the people in your community? (1 = very uncomfortable; 5 = very comfortable)

(no label) 3

Q3: How many friends could you call if you had a problem? 1-2

Q4: On average, how many hours do you spend on homework per week?

(no label) More than 20 hours

Q5: How often do you usually smile throughout the day? Sometimes

Q6: What is your usual expression when you meet a stranger for the first time? :-)

Q7: How much time do you spend on social networking each day (wechat, qq, sms, skype, etc.)?

(no label) Less than 30 minutes

Q8: How many hours of sleep do you get per night? 5-6

Q9: Describe the quality of your sleep for the last 5 nights I didn't sleep very much

Q10: Do you agree with the following statement: Most people like me.

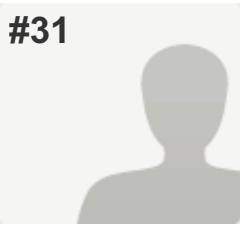
(no label) Disagree

Q11: How would you describe the general attitude of the people around you?

(no label) Friendly

Q12: When other people around me are happy... (no label)	I feel a little better.
Q13: How satisfied are you with your life right now/ (1=very unsatisfied; 10= very satisfied)	1
Q14: How long do you spend traveling to and from school most days?	30 to 45 minutes
Q15: How often do you daydream?	Rarely
Q16: Do you agree with the following statement: I am usually able to have what I want.	Disagree
Q17: What is the most important factor for happiness?	you can do what you like everyday
Q18: Male or Female	female
Q19: Grade Level	9
Q20: Homeroom	c401

#31

**COMPLETE****Collector:** Web Link 1 (Web Link)**Started:** Sunday, February 01, 2015 3:58:04 PM**Last Modified:** Sunday, February 01, 2015 6:02:26 PM**Time Spent:** 02:04:22**IP Address:** 180.173.106.207

PAGE 1

Q1: How would you describe your relationship with your family? Very Close

Q2: How comfortable are you with the people in your community? (1 = very uncomfortable; 5 = very comfortable)

(no label) 5

Q3: How many friends could you call if you had a problem? 3-4

Q4: On average, how many hours do you spend on homework per week?

(no label) 5-9 hours

Q5: How often do you usually smile throughout the day? Sometimes

Q6: What is your usual expression when you meet a stranger for the first time? :-)

Q7: How much time do you spend on social networking each day (wechat, qq, sms, skype, etc.)?

(no label) 30 minutes to an hour

Q8: How many hours of sleep do you get per night? 7-8

Q9: Describe the quality of your sleep for the last 5 nights I slept mostly all through the night.

Q10: Do you agree with the following statement: Most people like me.

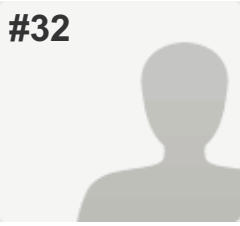
(no label) Agree

Q11: How would you describe the general attitude of the people around you?

(no label) Friendly

Q12: When other people around me are happy... (no label)	I feel happier.
Q13: How satisfied are you with your life right now/ (1=very unsatisfied; 10= very satisfied)	9
Q14: How long do you spend traveling to and from school most days?	Less than 20 minutes
Q15: How often do you daydream?	Rarely
Q16: Do you agree with the following statement: I am usually able to have what I want.	Disagree
Q17: What is the most important factor for happiness?	Happy
Q18: Male or Female	M
Q19: Grade Level	G9
Q20: Homeroom	Koopman

#32



COMPLETE

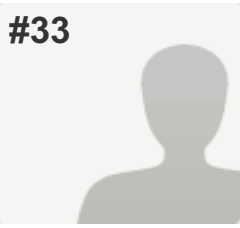
Collector: Web Link 1 (Web Link)
Started: Sunday, February 01, 2015 6:03:34 PM
Last Modified: Sunday, February 01, 2015 6:05:37 PM
Time Spent: 00:02:02
IP Address: 180.173.106.207

PAGE 1

Q1: How would you describe your relationship with your family?	Very Close
Q2: How comfortable are you with the people in your community? (1 = very uncomfortable; 5 = very comfortable)	
(no label)	5
Q3: How many friends could you call if you had a problem?	0
Q4: On average, how many hours do you spend on homework per week?	
(no label)	2-4 hours
Q5: How often do you usually smile throughout the day?	Rarely
Q6: What is your usual expression when you meet a stranger for the first time?	--V--
Q7: How much time do you spend on social networking each day (wechat, qq, sms, skype, etc.)?	
(no label)	30 minutes to an hour
Q8: How many hours of sleep do you get per night?	More than 8
Q9: Describe the quality of your sleep for the last 5 nights	I slept mostly all through the night.
Q10: Do you agree with the following statement: Most people like me.	
(no label)	Agree
Q11: How would you describe the general attitude of the people around you?	
(no label)	Friendly

Q12: When other people around me are happy... (no label)	I feel happier.
Q13: How satisfied are you with your life right now/ (1=very unsatisfied; 10= very satisfied)	8
Q14: How long do you spend traveling to and from school most days?	30 to 45 minutes
Q15: How often do you daydream?	Rarely
Q16: Do you agree with the following statement: I am usually able to have what I want.	Agree
Q17: What is the most important factor for happiness?	Be happy, Don't worry
Q18: Male or Female	Male
Q19: Grade Level	10
Q20: Homeroom	Wikes

#33



COMPLETE

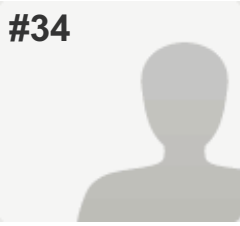
Collector: Web Link 1 (Web Link)
Started: Sunday, February 01, 2015 6:02:42 PM
Last Modified: Sunday, February 01, 2015 6:07:22 PM
Time Spent: 00:04:39
IP Address: 180.173.106.207

PAGE 1

Q1: How would you describe your relationship with your family?	Very Close
Q2: How comfortable are you with the people in your community? (1 = very uncomfortable; 5 = very comfortable)	
(no label)	1
Q3: How many friends could you call if you had a problem?	3-4
Q4: On average, how many hours do you spend on homework per week?	
(no label)	10-20 hours
Q5: How often do you usually smile throughout the day?	Sometimes
Q6: What is your usual expression when you meet a stranger for the first time?	:-)
Q7: How much time do you spend on social networking each day (wechat, qq, sms, skype, etc.)?	
(no label)	30 minutes to an hour
Q8: How many hours of sleep do you get per night?	5-6
Q9: Describe the quality of your sleep for the last 5 nights	I slept all night long without interruptions.
Q10: Do you agree with the following statement: Most people like me.	
(no label)	Agree
Q11: How would you describe the general attitude of the people around you?	
(no label)	Friendly

Q12: When other people around me are happy... (no label)	I feel happier.
Q13: How satisfied are you with your life right now/ (1=very unsatisfied; 10= very satisfied)	10
Q14: How long do you spend traveling to and from school most days?	Less than 20 minutes
Q15: How often do you daydream?	Rarely
Q16: Do you agree with the following statement: I am usually able to have what I want.	Agree
Q17: What is the most important factor for happiness?	Food
Q18: Male or Female	Male
Q19: Grade Level	10
Q20: Homeroom	10 Manno

#34

**COMPLETE****Collector:** Web Link 1 (Web Link)**Started:** Sunday, February 01, 2015 6:03:03 PM**Last Modified:** Sunday, February 01, 2015 6:07:57 PM**Time Spent:** 00:04:54**IP Address:** 180.173.106.207

PAGE 1

Q1: How would you describe your relationship with your family? Very Close

Q2: How comfortable are you with the people in your community? (1 = very uncomfortable; 5 = very comfortable)

(no label) 5

Q3: How many friends could you call if you had a problem? 3-4

Q4: On average, how many hours do you spend on homework per week?

(no label) 10-20 hours

Q5: How often do you usually smile throughout the day? All the time

Q6: What is your usual expression when you meet a stranger for the first time? :-)

Q7: How much time do you spend on social networking each day (wechat, qq, sms, skype, etc.)?

(no label) 1.5 to 2 hours

Q8: How many hours of sleep do you get per night? 5-6

Q9: Describe the quality of your sleep for the last 5 nights I didn't sleep very much

Q10: Do you agree with the following statement: Most people like me.

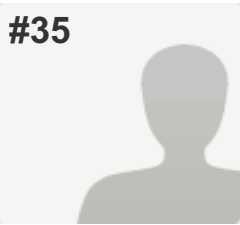
(no label) Disagree

Q11: How would you describe the general attitude of the people around you?

(no label) Friendly

Q12: When other people around me are happy... (no label)	I am not affected.
Q13: How satisfied are you with your life right now/ (1=very unsatisfied; 10= very satisfied)	10
Q14: How long do you spend traveling to and from school most days?	Less than 20 minutes
Q15: How often do you daydream?	All the time
Q16: Do you agree with the following statement: I am usually able to have what I want.	Agree
Q17: What is the most important factor for happiness?	Everyone I love lives happily and healthy
Q18: Male or Female	Female
Q19: Grade Level	G10
Q20: Homeroom	10 Wilkes

#35



COMPLETE

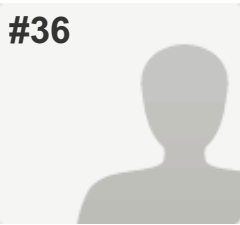
Collector: Web Link 1 (Web Link)
Started: Sunday, February 01, 2015 6:05:33 PM
Last Modified: Sunday, February 01, 2015 6:09:04 PM
Time Spent: 00:03:31
IP Address: 202.158.164.42

PAGE 1

Q1: How would you describe your relationship with your family?	Fairly Close
Q2: How comfortable are you with the people in your community? (1 = very uncomfortable; 5 = very comfortable)	
(no label)	4
Q3: How many friends could you call if you had a problem?	5 or more
Q4: On average, how many hours do you spend on homework per week?	
(no label)	More than 20 hours
Q5: How often do you usually smile throughout the day?	Sometimes
Q6: What is your usual expression when you meet a stranger for the first time?	:-)
Q7: How much time do you spend on social networking each day (wechat, qq, sms, skype, etc.)?	
(no label)	30 minutes to an hour
Q8: How many hours of sleep do you get per night?	5-6
Q9: Describe the quality of your sleep for the last 5 nights	I slept all night long without interruptions.
Q10: Do you agree with the following statement: Most people like me.	
(no label)	Agree
Q11: How would you describe the general attitude of the people around you?	
(no label)	Friendly

Q12: When other people around me are happy... (no label)	I feel happier.
Q13: How satisfied are you with your life right now/ (1=very unsatisfied; 10= very satisfied)	8
Q14: How long do you spend traveling to and from school most days?	1 hour to 1 and a half hours
Q15: How often do you daydream?	Rarely
Q16: Do you agree with the following statement: I am usually able to have what I want.	Agree
Q17: What is the most important factor for happiness?	Food
Q18: Male or Female	Female
Q19: Grade Level	10
Q20: Homeroom	Wilkes

#36



COMPLETE

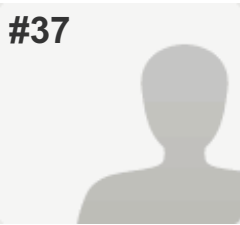
Collector: Web Link 1 (Web Link)
Started: Sunday, February 01, 2015 6:05:53 PM
Last Modified: Sunday, February 01, 2015 6:09:09 PM
Time Spent: 00:03:15
IP Address: 180.173.106.207

PAGE 1

Q1: How would you describe your relationship with your family?	Fairly Close
Q2: How comfortable are you with the people in your community? (1 = very uncomfortable; 5 = very comfortable)	
(no label)	3
Q3: How many friends could you call if you had a problem?	3-4
Q4: On average, how many hours do you spend on homework per week?	
(no label)	5-9 hours
Q5: How often do you usually smile throughout the day?	Sometimes
Q6: What is your usual expression when you meet a stranger for the first time?	:-(
Q7: How much time do you spend on social networking each day (wechat, qq, sms, skype, etc.)?	
(no label)	1.5 to 2 hours
Q8: How many hours of sleep do you get per night?	5-6
Q9: Describe the quality of your sleep for the last 5 nights	I slept mostly all through the night.
Q10: Do you agree with the following statement: Most people like me.	
(no label)	Agree
Q11: How would you describe the general attitude of the people around you?	
(no label)	Friendly

Q12: When other people around me are happy... (no label)	I feel happier.
Q13: How satisfied are you with your life right now/ (1=very unsatisfied; 10= very satisfied)	7
Q14: How long do you spend traveling to and from school most days?	1 hour to 1 and a half hours
Q15: How often do you daydream?	Rarely
Q16: Do you agree with the following statement: I am usually able to have what I want.	Agree
Q17: What is the most important factor for happiness?	Weather
Q18: Male or Female	Male
Q19: Grade Level	10
Q20: Homeroom	Wilkes

#37



COMPLETE

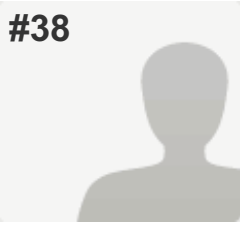
Collector: Web Link 1 (Web Link)
Started: Sunday, February 01, 2015 6:04:11 PM
Last Modified: Sunday, February 01, 2015 6:09:11 PM
Time Spent: 00:05:00
IP Address: 180.173.106.207

PAGE 1

Q1: How would you describe your relationship with your family?	Very Close
Q2: How comfortable are you with the people in your community? (1 = very uncomfortable; 5 = very comfortable)	
(no label)	5
Q3: How many friends could you call if you had a problem?	0
Q4: On average, how many hours do you spend on homework per week?	
(no label)	5-9 hours
Q5: How often do you usually smile throughout the day?	All the time
Q6: What is your usual expression when you meet a stranger for the first time?	:-)
Q7: How much time do you spend on social networking each day (wechat, qq, sms, skype, etc.)?	
(no label)	30 minutes to an hour
Q8: How many hours of sleep do you get per night?	7-8
Q9: Describe the quality of your sleep for the last 5 nights	I slept all night long without interruptions.
Q10: Do you agree with the following statement: Most people like me.	
(no label)	Strongly Agree
Q11: How would you describe the general attitude of the people around you?	
(no label)	Friendly

Q12: When other people around me are happy... (no label)	I feel happier.
Q13: How satisfied are you with your life right now/ (1=very unsatisfied; 10= very satisfied)	10
Q14: How long do you spend traveling to and from school most days?	Less than 20 minutes
Q15: How often do you daydream?	All the time
Q16: Do you agree with the following statement: I am usually able to have what I want.	Agree
Q17: What is the most important factor for happiness?	Talking
Q18: Male or Female	Male
Q19: Grade Level	10
Q20: Homeroom	Wilkes

#38



COMPLETE

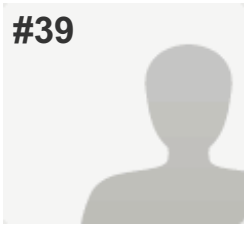
Collector: Web Link 1 (Web Link)
Started: Sunday, February 01, 2015 6:05:54 PM
Last Modified: Sunday, February 01, 2015 6:09:28 PM
Time Spent: 00:03:33
IP Address: 202.158.164.42

PAGE 1

Q1: How would you describe your relationship with your family?	Fairly Close
Q2: How comfortable are you with the people in your community? (1 = very uncomfortable; 5 = very comfortable)	
(no label)	4
Q3: How many friends could you call if you had a problem?	1-2
Q4: On average, how many hours do you spend on homework per week?	
(no label)	5-9 hours
Q5: How often do you usually smile throughout the day?	All the time
Q6: What is your usual expression when you meet a stranger for the first time?	TVT
Q7: How much time do you spend on social networking each day (wechat, qq, sms, skype, etc.)?	
(no label)	30 minutes to an hour
Q8: How many hours of sleep do you get per night?	5-6
Q9: Describe the quality of your sleep for the last 5 nights	I slept mostly all through the night.
Q10: Do you agree with the following statement: Most people like me.	
(no label)	Agree
Q11: How would you describe the general attitude of the people around you?	
(no label)	Friendly

Q12: When other people around me are happy... (no label)	I feel happier.
Q13: How satisfied are you with your life right now/ (1=very unsatisfied; 10= very satisfied)	10
Q14: How long do you spend traveling to and from school most days?	30 to 45 minutes
Q15: How often do you daydream?	Sometimes
Q16: Do you agree with the following statement: I am usually able to have what I want.	Agree
Q17: What is the most important factor for happiness?	comfortable environment
Q18: Male or Female	female
Q19: Grade Level	10th grade
Q20: Homeroom	10A

#39



COMPLETE

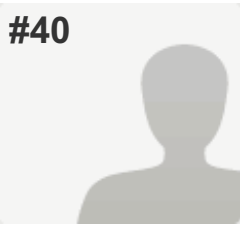
Collector: Web Link 1 (Web Link)
Started: Sunday, February 01, 2015 6:05:48 PM
Last Modified: Sunday, February 01, 2015 6:10:12 PM
Time Spent: 00:04:24
IP Address: 180.173.106.207

PAGE 1

Q1: How would you describe your relationship with your family?	Not Close, but we get along
Q2: How comfortable are you with the people in your community? (1 = very uncomfortable; 5 = very comfortable)	
(no label)	4
Q3: How many friends could you call if you had a problem?	5 or more
Q4: On average, how many hours do you spend on homework per week?	
(no label)	5-9 hours
Q5: How often do you usually smile throughout the day?	Sometimes
Q6: What is your usual expression when you meet a stranger for the first time?	--V--
Q7: How much time do you spend on social networking each day (wechat, qq, sms, skype, etc.)?	
(no label)	More than 2 hours
Q8: How many hours of sleep do you get per night?	7-8
Q9: Describe the quality of your sleep for the last 5 nights	I woke up more than twice every night.
Q10: Do you agree with the following statement: Most people like me.	
(no label)	Agree
Q11: How would you describe the general attitude of the people around you?	
(no label)	Friendly

Q12: When other people around me are happy... (no label)	I feel happier.
Q13: How satisfied are you with your life right now/ (1=very unsatisfied; 10= very satisfied)	9
Q14: How long do you spend traveling to and from school most days?	Less than 20 minutes
Q15: How often do you daydream?	Sometimes
Q16: Do you agree with the following statement: I am usually able to have what I want.	Agree
Q17: What is the most important factor for happiness?	Friends
Q18: Male or Female	Female
Q19: Grade Level	G10
Q20: Homeroom	10 White

#40



COMPLETE

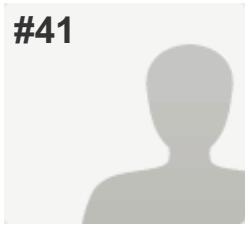
Collector: Web Link 1 (Web Link)
Started: Sunday, February 01, 2015 6:07:25 PM
Last Modified: Sunday, February 01, 2015 6:11:02 PM
Time Spent: 00:03:37
IP Address: 180.173.106.207

PAGE 1

Q1: How would you describe your relationship with your family?	Not Close, but we get along
Q2: How comfortable are you with the people in your community? (1 = very uncomfortable; 5 = very comfortable)	
(no label)	2
Q3: How many friends could you call if you had a problem?	1-2
Q4: On average, how many hours do you spend on homework per week?	
(no label)	10-20 hours
Q5: How often do you usually smile throughout the day?	Never
Q6: What is your usual expression when you meet a stranger for the first time?	TVT
Q7: How much time do you spend on social networking each day (wechat, qq, sms, skype, etc.)?	
(no label)	More than 2 hours
Q8: How many hours of sleep do you get per night?	5-6
Q9: Describe the quality of your sleep for the last 5 nights	I didn't sleep very much
Q10: Do you agree with the following statement: Most people like me.	
(no label)	Disagree
Q11: How would you describe the general attitude of the people around you?	
(no label)	Negative

Q12: When other people around me are happy... (no label)	I am not affected.
Q13: How satisfied are you with your life right now/ (1=very unsatisfied; 10= very satisfied)	1
Q14: How long do you spend traveling to and from school most days?	More than 2 hours
Q15: How often do you daydream?	All the time
Q16: Do you agree with the following statement: I am usually able to have what I want.	Strongly Disagree
Q17: What is the most important factor for happiness?	friendship
Q18: Male or Female	Male
Q19: Grade Level	12
Q20: Homeroom	Ms. Cecile

#41



COMPLETE

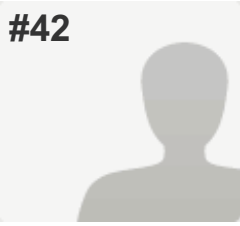
Collector: Web Link 1 (Web Link)
Started: Sunday, February 01, 2015 6:06:54 PM
Last Modified: Sunday, February 01, 2015 6:11:36 PM
Time Spent: 00:04:42
IP Address: 202.158.164.42

PAGE 1

Q1: How would you describe your relationship with your family?	Very Close
Q2: How comfortable are you with the people in your community? (1 = very uncomfortable; 5 = very comfortable)	
(no label)	5
Q3: How many friends could you call if you had a problem?	5 or more
Q4: On average, how many hours do you spend on homework per week?	
(no label)	5-9 hours
Q5: How often do you usually smile throughout the day?	All the time
Q6: What is your usual expression when you meet a stranger for the first time?	--V--
Q7: How much time do you spend on social networking each day (wechat, qq, sms, skype, etc.)?	
(no label)	1.5 to 2 hours
Q8: How many hours of sleep do you get per night?	5-6
Q9: Describe the quality of your sleep for the last 5 nights	I slept mostly all through the night.
Q10: Do you agree with the following statement: Most people like me.	
(no label)	Agree
Q11: How would you describe the general attitude of the people around you?	
(no label)	Friendly

Q12: When other people around me are happy... (no label)	I feel a little better.
Q13: How satisfied are you with your life right now/ (1=very unsatisfied; 10= very satisfied)	8
Q14: How long do you spend traveling to and from school most days?	Less than 20 minutes
Q15: How often do you daydream?	Sometimes
Q16: Do you agree with the following statement: I am usually able to have what I want.	Agree
Q17: What is the most important factor for happiness?	music
Q18: Male or Female	female
Q19: Grade Level	10
Q20: Homeroom	Wilkes

#42



COMPLETE

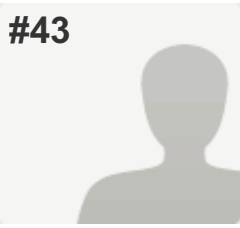
Collector: Web Link 1 (Web Link)
Started: Sunday, February 01, 2015 6:07:35 PM
Last Modified: Sunday, February 01, 2015 6:11:46 PM
Time Spent: 00:04:10
IP Address: 202.158.164.42

PAGE 1

Q1: How would you describe your relationship with your family?	Fairly Close
Q2: How comfortable are you with the people in your community? (1 = very uncomfortable; 5 = very comfortable)	
(no label)	5
Q3: How many friends could you call if you had a problem?	0
Q4: On average, how many hours do you spend on homework per week?	
(no label)	More than 20 hours
Q5: How often do you usually smile throughout the day?	Never
Q6: What is your usual expression when you meet a stranger for the first time?	:-)
Q7: How much time do you spend on social networking each day (wechat, qq, sms, skype, etc.)?	<i>Respondent skipped this question</i>
Q8: How many hours of sleep do you get per night?	7-8
Q9: Describe the quality of your sleep for the last 5 nights	I slept all night long without interruptions.
Q10: Do you agree with the following statement: Most people like me.	
(no label)	Agree
Q11: How would you describe the general attitude of the people around you?	
(no label)	Friendly

Q12: When other people around me are happy... (no label)	I feel happier.
Q13: How satisfied are you with your life right now/ (1=very unsatisfied; 10= very satisfied)	10
Q14: How long do you spend traveling to and from school most days?	Less than 20 minutes
Q15: How often do you daydream?	All the time
Q16: Do you agree with the following statement: I am usually able to have what I want.	Disagree
Q17: What is the most important factor for happiness?	No sick.
Q18: Male or Female	Male
Q19: Grade Level	10
Q20: Homeroom	Manno

#43



COMPLETE

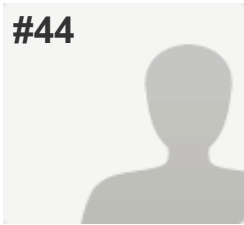
Collector: Web Link 1 (Web Link)
Started: Sunday, February 01, 2015 5:40:45 PM
Last Modified: Sunday, February 01, 2015 6:13:32 PM
Time Spent: 00:32:46
IP Address: 180.173.106.207

PAGE 1

Q1: How would you describe your relationship with your family?	Fairly Close
Q2: How comfortable are you with the people in your community? (1 = very uncomfortable; 5 = very comfortable)	
(no label)	3
Q3: How many friends could you call if you had a problem?	5 or more
Q4: On average, how many hours do you spend on homework per week?	
(no label)	10-20 hours
Q5: How often do you usually smile throughout the day?	Sometimes
Q6: What is your usual expression when you meet a stranger for the first time?	:-)
Q7: How much time do you spend on social networking each day (wechat, qq, sms, skype, etc.)?	
(no label)	More than 2 hours
Q8: How many hours of sleep do you get per night?	5-6
Q9: Describe the quality of your sleep for the last 5 nights	I slept mostly all through the night.
Q10: Do you agree with the following statement: Most people like me.	
(no label)	Agree
Q11: How would you describe the general attitude of the people around you?	
(no label)	Friendly

Q12: When other people around me are happy... (no label)	I am not affected.
Q13: How satisfied are you with your life right now/ (1=very unsatisfied; 10= very satisfied)	6
Q14: How long do you spend traveling to and from school most days?	30 to 45 minutes
Q15: How often do you daydream?	Rarely
Q16: Do you agree with the following statement: I am usually able to have what I want.	Agree
Q17: What is the most important factor for happiness?	Being optimistic
Q18: Male or Female	female
Q19: Grade Level	11
Q20: Homeroom	11coyne

#44



COMPLETE

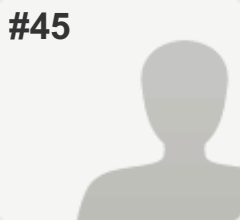
Collector: Web Link 1 (Web Link)
Started: Sunday, February 01, 2015 6:04:44 PM
Last Modified: Sunday, February 01, 2015 6:13:46 PM
Time Spent: 00:09:01
IP Address: 180.173.106.207

PAGE 1

Q1: How would you describe your relationship with your family?	Very Close
Q2: How comfortable are you with the people in your community? (1 = very uncomfortable; 5 = very comfortable)	
(no label)	4
Q3: How many friends could you call if you had a problem?	3-4
Q4: On average, how many hours do you spend on homework per week?	
(no label)	2-4 hours
Q5: How often do you usually smile throughout the day?	All the time
Q6: What is your usual expression when you meet a stranger for the first time?	:-)
Q7: How much time do you spend on social networking each day (wechat, qq, sms, skype, etc.)?	
(no label)	More than 2 hours
Q8: How many hours of sleep do you get per night?	5-6
Q9: Describe the quality of your sleep for the last 5 nights	I slept mostly all through the night.
Q10: Do you agree with the following statement: Most people like me.	
(no label)	Agree
Q11: How would you describe the general attitude of the people around you?	
(no label)	Friendly

Q12: When other people around me are happy... (no label)	I feel a little better.
Q13: How satisfied are you with your life right now/ (1=very unsatisfied; 10= very satisfied)	7
Q14: How long do you spend traveling to and from school most days?	1 hour to 1 and a half hours
Q15: How often do you daydream?	Sometimes
Q16: Do you agree with the following statement: I am usually able to have what I want.	Agree
Q17: What is the most important factor for happiness?	the mood of you to treat the things
Q18: Male or Female	female
Q19: Grade Level	10
Q20: Homeroom	10manno

#45



COMPLETE

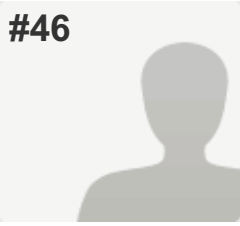
Collector: Web Link 1 (Web Link)
Started: Sunday, February 01, 2015 6:06:45 PM
Last Modified: Sunday, February 01, 2015 6:13:57 PM
Time Spent: 00:07:12
IP Address: 180.173.106.207

PAGE 1

Q1: How would you describe your relationship with your family?	Very Close
Q2: How comfortable are you with the people in your community? (1 = very uncomfortable; 5 = very comfortable)	
(no label)	5
Q3: How many friends could you call if you had a problem?	3-4
Q4: On average, how many hours do you spend on homework per week?	
(no label)	2-4 hours
Q5: How often do you usually smile throughout the day?	Sometimes
Q6: What is your usual expression when you meet a stranger for the first time?	TVT
Q7: How much time do you spend on social networking each day (wechat, qq, sms, skype, etc.)?	
(no label)	30 minutes to an hour
Q8: How many hours of sleep do you get per night?	7-8
Q9: Describe the quality of your sleep for the last 5 nights	I didn't sleep very much
Q10: Do you agree with the following statement: Most people like me.	
(no label)	Agree
Q11: How would you describe the general attitude of the people around you?	
(no label)	Friendly

Q12: When other people around me are happy... (no label)	I feel happier.
Q13: How satisfied are you with your life right now/ (1=very unsatisfied; 10= very satisfied)	7
Q14: How long do you spend traveling to and from school most days?	Less than 20 minutes
Q15: How often do you daydream?	Never
Q16: Do you agree with the following statement: I am usually able to have what I want.	Agree
Q17: What is the most important factor for happiness?	calm and positive attitude
Q18: Male or Female	Male
Q19: Grade Level	10
Q20: Homeroom	White

#46

**COMPLETE****Collector:** Web Link 1 (Web Link)**Started:** Sunday, February 01, 2015 3:59:15 PM**Last Modified:** Sunday, February 01, 2015 7:00:58 PM**Time Spent:** 03:01:42**IP Address:** 180.173.106.207

PAGE 1

Q1: How would you describe your relationship with your family? Very Close

Q2: How comfortable are you with the people in your community? (1 = very uncomfortable; 5 = very comfortable)

(no label) 4

Q3: How many friends could you call if you had a problem? 0

Q4: On average, how many hours do you spend on homework per week?

(no label) 10-20 hours

Q5: How often do you usually smile throughout the day? Rarely

Q6: What is your usual expression when you meet a stranger for the first time? :-)

Q7: How much time do you spend on social networking each day (wechat, qq, sms, skype, etc.)?

(no label) 1.5 to 2 hours

Q8: How many hours of sleep do you get per night? 7-8

Q9: Describe the quality of your sleep for the last 5 nights I slept mostly all through the night.

Q10: Do you agree with the following statement: Most people like me.

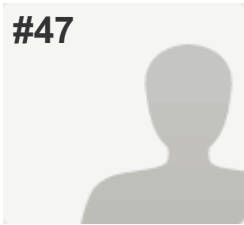
(no label) Agree

Q11: How would you describe the general attitude of the people around you?

(no label) Friendly

Q12: When other people around me are happy... (no label)	I feel a little better.
Q13: How satisfied are you with your life right now/ (1=very unsatisfied; 10= very satisfied)	7
Q14: How long do you spend traveling to and from school most days?	1 hour to 1 and a half hours
Q15: How often do you daydream?	Rarely
Q16: Do you agree with the following statement: I am usually able to have what I want.	Disagree
Q17: What is the most important factor for happiness?	wisdom of self-knowledge
Q18: Male or Female	Male
Q19: Grade Level	9
Q20: Homeroom	C401 Koopman

#47



COMPLETE

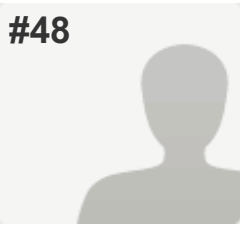
Collector: Web Link 1 (Web Link)
Started: Sunday, February 01, 2015 6:56:32 PM
Last Modified: Sunday, February 01, 2015 7:02:18 PM
Time Spent: 00:05:46
IP Address: 180.173.106.207

PAGE 1

Q1: How would you describe your relationship with your family?	Not Close, but we get along
Q2: How comfortable are you with the people in your community? (1 = very uncomfortable; 5 = very comfortable)	
(no label)	3
Q3: How many friends could you call if you had a problem?	5 or more
Q4: On average, how many hours do you spend on homework per week?	
(no label)	10-20 hours
Q5: How often do you usually smile throughout the day?	Sometimes
Q6: What is your usual expression when you meet a stranger for the first time?	--V--
Q7: How much time do you spend on social networking each day (wechat, qq, sms, skype, etc.)?	
(no label)	1.5 to 2 hours
Q8: How many hours of sleep do you get per night?	5-6
Q9: Describe the quality of your sleep for the last 5 nights	I slept all night long without interruptions.
Q10: Do you agree with the following statement: Most people like me.	
(no label)	Disagree
Q11: How would you describe the general attitude of the people around you?	
(no label)	Friendly

Q12: When other people around me are happy... (no label)	I feel a little better.
Q13: How satisfied are you with your life right now/ (1=very unsatisfied; 10= very satisfied)	1
Q14: How long do you spend traveling to and from school most days?	Less than 20 minutes
Q15: How often do you daydream?	All the time
Q16: Do you agree with the following statement: I am usually able to have what I want.	Disagree
Q17: What is the most important factor for happiness?	good conditions
Q18: Male or Female	Male
Q19: Grade Level	11
Q20: Homeroom	Wade

#48

**COMPLETE****Collector:** Web Link 1 (Web Link)**Started:** Sunday, February 01, 2015 8:37:18 PM**Last Modified:** Sunday, February 01, 2015 8:44:24 PM**Time Spent:** 00:07:05**IP Address:** 180.173.106.207

PAGE 1

Q1: How would you describe your relationship with your family? Very Close

Q2: How comfortable are you with the people in your community? (1 = very uncomfortable; 5 = very comfortable)

(no label) 4

Q3: How many friends could you call if you had a problem? 5 or more

Q4: On average, how many hours do you spend on homework per week?

(no label) More than 20 hours

Q5: How often do you usually smile throughout the day? Sometimes

Q6: What is your usual expression when you meet a stranger for the first time? :-)

Q7: How much time do you spend on social networking each day (wechat, qq, sms, skype, etc.)?

(no label) 1.5 to 2 hours

Q8: How many hours of sleep do you get per night? 5-6

Q9: Describe the quality of your sleep for the last 5 nights I didn't sleep very much

Q10: Do you agree with the following statement: Most people like me.

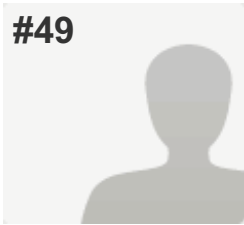
(no label) Agree

Q11: How would you describe the general attitude of the people around you?

(no label) Friendly

Q12: When other people around me are happy... (no label)	I feel even worse.
Q13: How satisfied are you with your life right now/ (1=very unsatisfied; 10= very satisfied)	9
Q14: How long do you spend traveling to and from school most days?	30 to 45 minutes
Q15: How often do you daydream?	All the time
Q16: Do you agree with the following statement: I am usually able to have what I want.	Agree
Q17: What is the most important factor for happiness?	Love
Q18: Male or Female	Male
Q19: Grade Level	11
Q20: Homeroom	11B

#49



COMPLETE

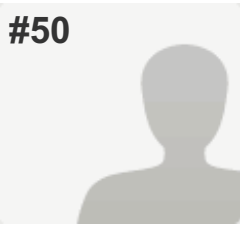
Collector: Web Link 1 (Web Link)
Started: Sunday, February 01, 2015 9:39:40 PM
Last Modified: Sunday, February 01, 2015 9:43:21 PM
Time Spent: 00:03:41
IP Address: 23.27.206.118

PAGE 1

Q1: How would you describe your relationship with your family?	Fairly Close
Q2: How comfortable are you with the people in your community? (1 = very uncomfortable; 5 = very comfortable)	
(no label)	2
Q3: How many friends could you call if you had a problem?	5 or more
Q4: On average, how many hours do you spend on homework per week?	
(no label)	5-9 hours
Q5: How often do you usually smile throughout the day?	Sometimes
Q6: What is your usual expression when you meet a stranger for the first time?	--V--
Q7: How much time do you spend on social networking each day (wechat, qq, sms, skype, etc.)?	
(no label)	More than 2 hours
Q8: How many hours of sleep do you get per night?	7-8
Q9: Describe the quality of your sleep for the last 5 nights	I slept all night long without interruptions.
Q10: Do you agree with the following statement: Most people like me.	
(no label)	Agree
Q11: How would you describe the general attitude of the people around you?	
(no label)	Friendly

Q12: When other people around me are happy... (no label)	I feel happier.
Q13: How satisfied are you with your life right now/ (1=very unsatisfied; 10= very satisfied)	8
Q14: How long do you spend traveling to and from school most days?	Less than 20 minutes
Q15: How often do you daydream?	Rarely
Q16: Do you agree with the following statement: I am usually able to have what I want.	Agree
Q17: What is the most important factor for happiness?	Sleeping quality
Q18: Male or Female	Male
Q19: Grade Level	10
Q20: Homeroom	10Manno

#50



COMPLETE

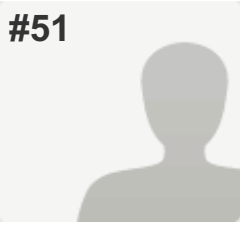
Collector: Web Link 1 (Web Link)
Started: Sunday, February 01, 2015 9:39:24 PM
Last Modified: Sunday, February 01, 2015 9:45:01 PM
Time Spent: 00:05:36
IP Address: 218.78.247.85

PAGE 1

Q1: How would you describe your relationship with your family?	Fairly Close
Q2: How comfortable are you with the people in your community? (1 = very uncomfortable; 5 = very comfortable)	
(no label)	5
Q3: How many friends could you call if you had a problem?	0
Q4: On average, how many hours do you spend on homework per week?	
(no label)	2-4 hours
Q5: How often do you usually smile throughout the day?	All the time
Q6: What is your usual expression when you meet a stranger for the first time?	:-(
Q7: How much time do you spend on social networking each day (wechat, qq, sms, skype, etc.)?	
(no label)	More than 2 hours
Q8: How many hours of sleep do you get per night?	7-8
Q9: Describe the quality of your sleep for the last 5 nights	I slept all night long without interruptions.
Q10: Do you agree with the following statement: Most people like me.	
(no label)	Strongly Agree
Q11: How would you describe the general attitude of the people around you?	
(no label)	Friendly

Q12: When other people around me are happy... (no label)	I feel happier.
Q13: How satisfied are you with your life right now/ (1=very unsatisfied; 10= very satisfied)	7
Q14: How long do you spend traveling to and from school most days?	Less than 20 minutes
Q15: How often do you daydream?	Sometimes
Q16: Do you agree with the following statement: I am usually able to have what I want.	Agree
Q17: What is the most important factor for happiness?	satisfy with what you already have right now ✧(≠ ∪ ≠☺)
Q18: Male or Female	female
Q19: Grade Level	10
Q20: Homeroom	Ms. Wilkes

#51



COMPLETE

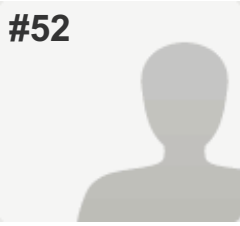
Collector: Web Link 1 (Web Link)
Started: Sunday, February 01, 2015 9:41:10 PM
Last Modified: Sunday, February 01, 2015 9:45:02 PM
Time Spent: 00:03:51
IP Address: 180.173.106.207

PAGE 1

Q1: How would you describe your relationship with your family?	Very Close
Q2: How comfortable are you with the people in your community? (1 = very uncomfortable; 5 = very comfortable)	
(no label)	1
Q3: How many friends could you call if you had a problem?	0
Q4: On average, how many hours do you spend on homework per week?	
(no label)	5-9 hours
Q5: How often do you usually smile throughout the day?	All the time
Q6: What is your usual expression when you meet a stranger for the first time?	--V--
Q7: How much time do you spend on social networking each day (wechat, qq, sms, skype, etc.)?	
(no label)	30 minutes to an hour
Q8: How many hours of sleep do you get per night?	7-8
Q9: Describe the quality of your sleep for the last 5 nights	I slept mostly all through the night.
Q10: Do you agree with the following statement: Most people like me.	
(no label)	Agree
Q11: How would you describe the general attitude of the people around you?	
(no label)	Friendly

Q12: When other people around me are happy... (no label)	I am not affected.
Q13: How satisfied are you with your life right now/ (1=very unsatisfied; 10= very satisfied)	9
Q14: How long do you spend traveling to and from school most days?	Less than 20 minutes
Q15: How often do you daydream?	Sometimes
Q16: Do you agree with the following statement: I am usually able to have what I want.	Agree
Q17: What is the most important factor for happiness?	Never hungry
Q18: Male or Female	Female
Q19: Grade Level	10
Q20: Homeroom	10Manno

#52



COMPLETE

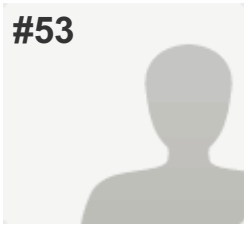
Collector: Web Link 1 (Web Link)
Started: Sunday, February 01, 2015 9:39:24 PM
Last Modified: Sunday, February 01, 2015 9:45:04 PM
Time Spent: 00:05:39
IP Address: 218.78.247.85

PAGE 1

Q1: How would you describe your relationship with your family?	Fairly Close
Q2: How comfortable are you with the people in your community? (1 = very uncomfortable; 5 = very comfortable)	
(no label)	5
Q3: How many friends could you call if you had a problem?	0
Q4: On average, how many hours do you spend on homework per week?	
(no label)	2-4 hours
Q5: How often do you usually smile throughout the day?	All the time
Q6: What is your usual expression when you meet a stranger for the first time?	:-(
Q7: How much time do you spend on social networking each day (wechat, qq, sms, skype, etc.)?	
(no label)	More than 2 hours
Q8: How many hours of sleep do you get per night?	7-8
Q9: Describe the quality of your sleep for the last 5 nights	I slept all night long without interruptions.
Q10: Do you agree with the following statement: Most people like me.	
(no label)	Strongly Agree
Q11: How would you describe the general attitude of the people around you?	
(no label)	Friendly

Q12: When other people around me are happy... (no label)	I feel happier.
Q13: How satisfied are you with your life right now/ (1=very unsatisfied; 10= very satisfied)	7
Q14: How long do you spend traveling to and from school most days?	Less than 20 minutes
Q15: How often do you daydream?	Sometimes
Q16: Do you agree with the following statement: I am usually able to have what I want.	Agree
Q17: What is the most important factor for happiness?	satisfy with what you already have right now ✧(≠ ∪ ≠☺)
Q18: Male or Female	female
Q19: Grade Level	10
Q20: Homeroom	Ms. Wilkes

#53



COMPLETE

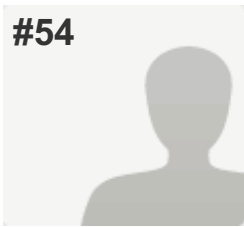
Collector: Web Link 1 (Web Link)
Started: Sunday, February 01, 2015 9:41:29 PM
Last Modified: Sunday, February 01, 2015 9:47:10 PM
Time Spent: 00:05:41
IP Address: 180.173.106.207

PAGE 1

Q1: How would you describe your relationship with your family?	Not Close, but we get along
Q2: How comfortable are you with the people in your community? (1 = very uncomfortable; 5 = very comfortable)	
(no label)	4
Q3: How many friends could you call if you had a problem?	5 or more
Q4: On average, how many hours do you spend on homework per week?	
(no label)	10-20 hours
Q5: How often do you usually smile throughout the day?	All the time
Q6: What is your usual expression when you meet a stranger for the first time?	--V--
Q7: How much time do you spend on social networking each day (wechat, qq, sms, skype, etc.)?	
(no label)	More than 2 hours
Q8: How many hours of sleep do you get per night?	5-6
Q9: Describe the quality of your sleep for the last 5 nights	I slept all night long without interruptions.
Q10: Do you agree with the following statement: Most people like me.	
(no label)	Agree
Q11: How would you describe the general attitude of the people around you?	
(no label)	Friendly

Q12: When other people around me are happy... (no label)	I feel a little better.
Q13: How satisfied are you with your life right now/ (1=very unsatisfied; 10= very satisfied)	7
Q14: How long do you spend traveling to and from school most days?	Less than 20 minutes
Q15: How often do you daydream?	All the time
Q16: Do you agree with the following statement: I am usually able to have what I want.	Agree
Q17: What is the most important factor for happiness?	free to do what I want (Freedom)
Q18: Male or Female	Female
Q19: Grade Level	G10
Q20: Homeroom	10 Wilkes

#54



COMPLETE

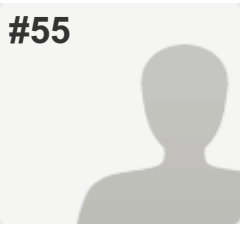
Collector: Web Link 1 (Web Link)
Started: Sunday, February 01, 2015 9:42:52 PM
Last Modified: Sunday, February 01, 2015 9:47:23 PM
Time Spent: 00:04:31
IP Address: 180.173.106.207

PAGE 1

Q1: How would you describe your relationship with your family?	Fairly Close
Q2: How comfortable are you with the people in your community? (1 = very uncomfortable; 5 = very comfortable)	
(no label)	4
Q3: How many friends could you call if you had a problem?	3-4
Q4: On average, how many hours do you spend on homework per week?	
(no label)	2-4 hours
Q5: How often do you usually smile throughout the day?	All the time
Q6: What is your usual expression when you meet a stranger for the first time?	:-)
Q7: How much time do you spend on social networking each day (wechat, qq, sms, skype, etc.)?	
(no label)	More than 2 hours
Q8: How many hours of sleep do you get per night?	5-6
Q9: Describe the quality of your sleep for the last 5 nights	I slept mostly all through the night.
Q10: Do you agree with the following statement: Most people like me.	
(no label)	Disagree
Q11: How would you describe the general attitude of the people around you?	
(no label)	Friendly

Q12: When other people around me are happy... (no label)	I am not affected.
Q13: How satisfied are you with your life right now/ (1=very unsatisfied; 10= very satisfied)	6
Q14: How long do you spend traveling to and from school most days?	Less than 20 minutes
Q15: How often do you daydream?	Sometimes
Q16: Do you agree with the following statement: I am usually able to have what I want.	Agree
Q17: What is the most important factor for happiness?	social life
Q18: Male or Female	female
Q19: Grade Level	10
Q20: Homeroom	10 white

#55



COMPLETE

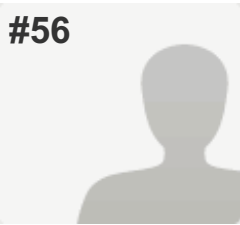
Collector: Web Link 1 (Web Link)
Started: Sunday, February 01, 2015 9:42:45 PM
Last Modified: Sunday, February 01, 2015 9:47:36 PM
Time Spent: 00:04:50
IP Address: 218.78.247.85

PAGE 1

Q1: How would you describe your relationship with your family?	Fairly Close
Q2: How comfortable are you with the people in your community? (1 = very uncomfortable; 5 = very comfortable)	
(no label)	3
Q3: How many friends could you call if you had a problem?	5 or more
Q4: On average, how many hours do you spend on homework per week?	
(no label)	5-9 hours
Q5: How often do you usually smile throughout the day?	Sometimes
Q6: What is your usual expression when you meet a stranger for the first time?	:-)
Q7: How much time do you spend on social networking each day (wechat, qq, sms, skype, etc.)?	
(no label)	1.5 to 2 hours
Q8: How many hours of sleep do you get per night?	7-8
Q9: Describe the quality of your sleep for the last 5 nights	I slept all night long without interruptions.
Q10: Do you agree with the following statement: Most people like me.	
(no label)	Agree
Q11: How would you describe the general attitude of the people around you?	
(no label)	Friendly

Q12: When other people around me are happy... (no label)	I am not affected.
Q13: How satisfied are you with your life right now/ (1=very unsatisfied; 10= very satisfied)	6
Q14: How long do you spend traveling to and from school most days?	30 to 45 minutes
Q15: How often do you daydream?	Rarely
Q16: Do you agree with the following statement: I am usually able to have what I want.	Agree
Q17: What is the most important factor for happiness?	You're happy
Q18: Male or Female	Male
Q19: Grade Level	10
Q20: Homeroom	Manno

#56



COMPLETE

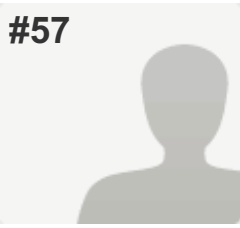
Collector: Web Link 1 (Web Link)
Started: Sunday, February 01, 2015 9:44:55 PM
Last Modified: Sunday, February 01, 2015 9:47:40 PM
Time Spent: 00:02:45
IP Address: 103.29.140.254

PAGE 1

Q1: How would you describe your relationship with your family?	Very Close
Q2: How comfortable are you with the people in your community? (1 = very uncomfortable; 5 = very comfortable)	
(no label)	3
Q3: How many friends could you call if you had a problem?	1-2
Q4: On average, how many hours do you spend on homework per week?	
(no label)	5-9 hours
Q5: How often do you usually smile throughout the day?	All the time
Q6: What is your usual expression when you meet a stranger for the first time?	:-)
Q7: How much time do you spend on social networking each day (wechat, qq, sms, skype, etc.)?	
(no label)	1.5 to 2 hours
Q8: How many hours of sleep do you get per night?	5-6
Q9: Describe the quality of your sleep for the last 5 nights	I slept mostly all through the night.
Q10: Do you agree with the following statement: Most people like me.	
(no label)	Agree
Q11: How would you describe the general attitude of the people around you?	
(no label)	Depressed

Q12: When other people around me are happy... (no label)	I feel a little better.
Q13: How satisfied are you with your life right now/ (1=very unsatisfied; 10= very satisfied)	6
Q14: How long do you spend traveling to and from school most days?	1 hour to 1 and a half hours
Q15: How often do you daydream?	All the time
Q16: Do you agree with the following statement: I am usually able to have what I want.	Agree
Q17: What is the most important factor for happiness?	Friends
Q18: Male or Female	Female
Q19: Grade Level	10
Q20: Homeroom	10 White

#57

**COMPLETE****Collector:** Web Link 1 (Web Link)**Started:** Sunday, February 01, 2015 9:40:14 PM**Last Modified:** Sunday, February 01, 2015 9:48:35 PM**Time Spent:** 00:08:20**IP Address:** 218.78.247.85

PAGE 1

Q1: How would you describe your relationship with your family? Very Close

Q2: How comfortable are you with the people in your community? (1 = very uncomfortable; 5 = very comfortable)

(no label) 3

Q3: How many friends could you call if you had a problem? *Respondent skipped this question*

Q4: On average, how many hours do you spend on homework per week?

(no label) 2-4 hours

Q5: How often do you usually smile throughout the day? Sometimes

Q6: What is your usual expression when you meet a stranger for the first time? :-)

Q7: How much time do you spend on social networking each day (wechat, qq, sms, skype, etc.)?

(no label) 1.5 to 2 hours

Q8: How many hours of sleep do you get per night? 7-8

Q9: Describe the quality of your sleep for the last 5 nights I slept mostly all through the night.

Q10: Do you agree with the following statement: Most people like me.

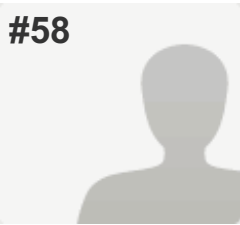
(no label) Agree

Q11: How would you describe the general attitude of the people around you?

(no label) Friendly

Q12: When other people around me are happy... (no label)	I feel happier.
Q13: How satisfied are you with your life right now/ (1=very unsatisfied; 10= very satisfied)	7
Q14: How long do you spend traveling to and from school most days?	30 to 45 minutes
Q15: How often do you daydream?	Rarely
Q16: Do you agree with the following statement: I am usually able to have what I want.	Agree
Q17: What is the most important factor for happiness?	Talk to people nicely when they are around, and to be able to complete your goal. Than you will be happy.
Q18: Male or Female	Male
Q19: Grade Level	G10
Q20: Homeroom	G10 Manno

#58

**COMPLETE****Collector:** Web Link 1 (Web Link)**Started:** Sunday, February 01, 2015 9:45:52 PM**Last Modified:** Sunday, February 01, 2015 9:49:13 PM**Time Spent:** 00:03:20**IP Address:** 180.173.106.207

PAGE 1

Q1: How would you describe your relationship with your family? Fairly Close

Q2: How comfortable are you with the people in your community? (1 = very uncomfortable; 5 = very comfortable)

(no label) 4

Q3: How many friends could you call if you had a problem? 3-4

Q4: On average, how many hours do you spend on homework per week?

(no label) 2-4 hours

Q5: How often do you usually smile throughout the day? All the time

Q6: What is your usual expression when you meet a stranger for the first time? :-)

Q7: How much time do you spend on social networking each day (wechat, qq, sms, skype, etc.)?

(no label) 1.5 to 2 hours

Q8: How many hours of sleep do you get per night? 7-8

Q9: Describe the quality of your sleep for the last 5 nights I woke up more than twice every night.

Q10: Do you agree with the following statement: Most people like me.

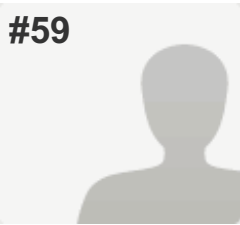
(no label) Agree

Q11: How would you describe the general attitude of the people around you?

(no label) Friendly

Q12: When other people around me are happy... (no label)	I feel a little better.
Q13: How satisfied are you with your life right now/ (1=very unsatisfied; 10= very satisfied)	5
Q14: How long do you spend traveling to and from school most days?	30 to 45 minutes
Q15: How often do you daydream?	Sometimes
Q16: Do you agree with the following statement: I am usually able to have what I want.	Agree
Q17: What is the most important factor for happiness?	Do what i like
Q18: Male or Female	female
Q19: Grade Level	10
Q20: Homeroom	10B

#59



COMPLETE

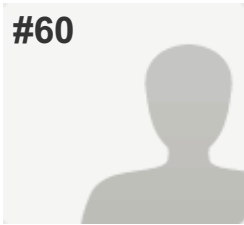
Collector: Web Link 1 (Web Link)
Started: Sunday, February 01, 2015 9:42:04 PM
Last Modified: Sunday, February 01, 2015 9:49:30 PM
Time Spent: 00:07:25
IP Address: 218.78.247.85

PAGE 1

Q1: How would you describe your relationship with your family?	Very Close
Q2: How comfortable are you with the people in your community? (1 = very uncomfortable; 5 = very comfortable)	
(no label)	3
Q3: How many friends could you call if you had a problem?	3-4
Q4: On average, how many hours do you spend on homework per week?	
(no label)	5-9 hours
Q5: How often do you usually smile throughout the day?	Sometimes
Q6: What is your usual expression when you meet a stranger for the first time?	TVT
Q7: How much time do you spend on social networking each day (wechat, qq, sms, skype, etc.)?	
(no label)	30 minutes to an hour
Q8: How many hours of sleep do you get per night?	7-8
Q9: Describe the quality of your sleep for the last 5 nights	I slept mostly all through the night.
Q10: Do you agree with the following statement: Most people like me.	
(no label)	Disagree
Q11: How would you describe the general attitude of the people around you?	
(no label)	Friendly

Q12: When other people around me are happy... (no label)	I feel a little better.
Q13: How satisfied are you with your life right now/ (1=very unsatisfied; 10= very satisfied)	5
Q14: How long do you spend traveling to and from school most days?	1 hour to 1 and a half hours
Q15: How often do you daydream?	Rarely
Q16: Do you agree with the following statement: I am usually able to have what I want.	Disagree
Q17: What is the most important factor for happiness?	no homework
Q18: Male or Female	Male
Q19: Grade Level	10
Q20: Homeroom	10White

#60

**COMPLETE****Collector:** Web Link 1 (Web Link)**Started:** Sunday, February 01, 2015 9:43:50 PM**Last Modified:** Sunday, February 01, 2015 9:49:46 PM**Time Spent:** 00:05:56**IP Address:** 218.78.247.85

PAGE 1

Q1: How would you describe your relationship with your family? Fairly Close

Q2: How comfortable are you with the people in your community? (1 = very uncomfortable; 5 = very comfortable)

(no label) 3

Q3: How many friends could you call if you had a problem? 5 or more

Q4: On average, how many hours do you spend on homework per week?

(no label) More than 20 hours

Q5: How often do you usually smile throughout the day? Rarely

Q6: What is your usual expression when you meet a stranger for the first time? TVT

Q7: How much time do you spend on social networking each day (wechat, qq, sms, skype, etc.)?

(no label) 1.5 to 2 hours

Q8: How many hours of sleep do you get per night? 5-6

Q9: Describe the quality of your sleep for the last 5 nights I slept mostly all through the night.

Q10: Do you agree with the following statement: Most people like me.

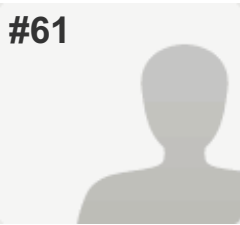
(no label) Agree

Q11: How would you describe the general attitude of the people around you?

(no label) Friendly

Q12: When other people around me are happy... (no label)	I am not affected.
Q13: How satisfied are you with your life right now/ (1=very unsatisfied; 10= very satisfied)	8
Q14: How long do you spend traveling to and from school most days?	1 hour to 1 and a half hours
Q15: How often do you daydream?	Rarely
Q16: Do you agree with the following statement: I am usually able to have what I want.	Agree
Q17: What is the most important factor for happiness?	money
Q18: Male or Female	male
Q19: Grade Level	10
Q20: Homeroom	c

#61



COMPLETE

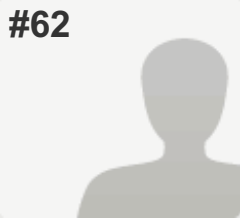
Collector: Web Link 1 (Web Link)
Started: Sunday, February 01, 2015 9:41:38 PM
Last Modified: Sunday, February 01, 2015 9:49:47 PM
Time Spent: 00:08:08
IP Address: 218.78.247.85

PAGE 1

Q1: How would you describe your relationship with your family?	Not Close, but we get along
Q2: How comfortable are you with the people in your community? (1 = very uncomfortable; 5 = very comfortable)	
(no label)	3
Q3: How many friends could you call if you had a problem?	1-2
Q4: On average, how many hours do you spend on homework per week?	
(no label)	5-9 hours
Q5: How often do you usually smile throughout the day?	Sometimes
Q6: What is your usual expression when you meet a stranger for the first time?	TVT
Q7: How much time do you spend on social networking each day (wechat, qq, sms, skype, etc.)?	
(no label)	30 minutes to an hour
Q8: How many hours of sleep do you get per night?	7-8
Q9: Describe the quality of your sleep for the last 5 nights	I slept all night long without interruptions.
Q10: Do you agree with the following statement: Most people like me.	
(no label)	Disagree
Q11: How would you describe the general attitude of the people around you?	
(no label)	Negative

Q12: When other people around me are happy... (no label)	I am not affected.
Q13: How satisfied are you with your life right now/ (1=very unsatisfied; 10= very satisfied)	8
Q14: How long do you spend traveling to and from school most days?	30 to 45 minutes
Q15: How often do you daydream?	Rarely
Q16: Do you agree with the following statement: I am usually able to have what I want.	Strongly Agree
Q17: What is the most important factor for happiness?	Firstly, you should feel happy.
Q18: Male or Female	Unable to tell
Q19: Grade Level	10
Q20: Homeroom	10Wilkes

#62

**COMPLETE****Collector:** Web Link 1 (Web Link)**Started:** Sunday, February 01, 2015 9:43:50 PM**Last Modified:** Sunday, February 01, 2015 9:49:49 PM**Time Spent:** 00:05:59**IP Address:** 218.78.247.85

PAGE 1

Q1: How would you describe your relationship with your family? Fairly Close

Q2: How comfortable are you with the people in your community? (1 = very uncomfortable; 5 = very comfortable)

(no label) 3

Q3: How many friends could you call if you had a problem? 5 or more

Q4: On average, how many hours do you spend on homework per week?

(no label) More than 20 hours

Q5: How often do you usually smile throughout the day? Rarely

Q6: What is your usual expression when you meet a stranger for the first time? TVT

Q7: How much time do you spend on social networking each day (wechat, qq, sms, skype, etc.)?

(no label) 1.5 to 2 hours

Q8: How many hours of sleep do you get per night? 5-6

Q9: Describe the quality of your sleep for the last 5 nights I slept mostly all through the night.

Q10: Do you agree with the following statement: Most people like me.

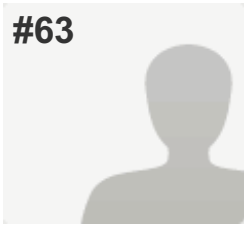
(no label) Agree

Q11: How would you describe the general attitude of the people around you?

(no label) Friendly

Q12: When other people around me are happy... (no label)	I am not affected.
Q13: How satisfied are you with your life right now/ (1=very unsatisfied; 10= very satisfied)	8
Q14: How long do you spend traveling to and from school most days?	1 hour to 1 and a half hours
Q15: How often do you daydream?	Rarely
Q16: Do you agree with the following statement: I am usually able to have what I want.	Agree
Q17: What is the most important factor for happiness?	money
Q18: Male or Female	male
Q19: Grade Level	10
Q20: Homeroom	c

#63



COMPLETE

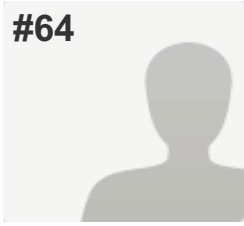
Collector: Web Link 1 (Web Link)
Started: Sunday, February 01, 2015 9:42:43 PM
Last Modified: Sunday, February 01, 2015 9:49:52 PM
Time Spent: 00:07:09
IP Address: 218.78.247.85

PAGE 1

Q1: How would you describe your relationship with your family?	Not Close, but we get along
Q2: How comfortable are you with the people in your community? (1 = very uncomfortable; 5 = very comfortable)	
(no label)	3
Q3: How many friends could you call if you had a problem?	3-4
Q4: On average, how many hours do you spend on homework per week?	
(no label)	Less than 1 hour
Q5: How often do you usually smile throughout the day?	Sometimes
Q6: What is your usual expression when you meet a stranger for the first time?	--V--
Q7: How much time do you spend on social networking each day (wechat, qq, sms, skype, etc.)?	<i>Respondent skipped this question</i>
Q8: How many hours of sleep do you get per night?	7-8
Q9: Describe the quality of your sleep for the last 5 nights	I slept all night long without interruptions.
Q10: Do you agree with the following statement: Most people like me.	
(no label)	Agree
Q11: How would you describe the general attitude of the people around you?	
(no label)	Friendly

Q12: When other people around me are happy... (no label)	I feel happier.
Q13: How satisfied are you with your life right now/ (1=very unsatisfied; 10= very satisfied)	7
Q14: How long do you spend traveling to and from school most days?	Less than 20 minutes
Q15: How often do you daydream?	Sometimes
Q16: Do you agree with the following statement: I am usually able to have what I want.	Disagree
Q17: What is the most important factor for happiness?	Take everything easy
Q18: Male or Female	Male
Q19: Grade Level	10
Q20: Homeroom	10White

#64



COMPLETE

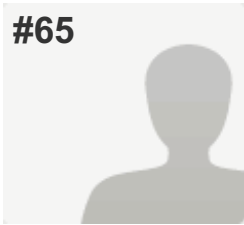
Collector: Web Link 1 (Web Link)
Started: Sunday, February 01, 2015 9:40:47 PM
Last Modified: Sunday, February 01, 2015 9:49:56 PM
Time Spent: 00:09:09
IP Address: 180.173.106.207

PAGE 1

Q1: How would you describe your relationship with your family?	Very Close
Q2: How comfortable are you with the people in your community? (1 = very uncomfortable; 5 = very comfortable)	
(no label)	5
Q3: How many friends could you call if you had a problem?	1-2
Q4: On average, how many hours do you spend on homework per week?	
(no label)	10-20 hours
Q5: How often do you usually smile throughout the day?	All the time
Q6: What is your usual expression when you meet a stranger for the first time?	:-)
Q7: How much time do you spend on social networking each day (wechat, qq, sms, skype, etc.)?	
(no label)	Less than 30 minutes
Q8: How many hours of sleep do you get per night?	7-8
Q9: Describe the quality of your sleep for the last 5 nights	I slept all night long without interruptions.
Q10: Do you agree with the following statement: Most people like me.	
(no label)	Agree
Q11: How would you describe the general attitude of the people around you?	
(no label)	Friendly

Q12: When other people around me are happy... (no label)	I feel happier.
Q13: How satisfied are you with your life right now/ (1=very unsatisfied; 10= very satisfied)	8
Q14: How long do you spend traveling to and from school most days?	Less than 20 minutes
Q15: How often do you daydream?	Never
Q16: Do you agree with the following statement: I am usually able to have what I want.	Agree
Q17: What is the most important factor for happiness?	follow your heart
Q18: Male or Female	male
Q19: Grade Level	10
Q20: Homeroom	10Manno

#65

**COMPLETE****Collector:** Web Link 1 (Web Link)**Started:** Sunday, February 01, 2015 9:46:58 PM**Last Modified:** Sunday, February 01, 2015 9:51:54 PM**Time Spent:** 00:04:55**IP Address:** 180.173.106.207

PAGE 1

Q1: How would you describe your relationship with your family? Very Close

Q2: How comfortable are you with the people in your community? (1 = very uncomfortable; 5 = very comfortable)

(no label) 4

Q3: How many friends could you call if you had a problem? 3-4

Q4: On average, how many hours do you spend on homework per week?

(no label) 5-9 hours

Q5: How often do you usually smile throughout the day? All the time

Q6: What is your usual expression when you meet a stranger for the first time? :-)

Q7: How much time do you spend on social networking each day (wechat, qq, sms, skype, etc.)?

(no label) More than 2 hours

Q8: How many hours of sleep do you get per night? 7-8

Q9: Describe the quality of your sleep for the last 5 nights I slept mostly all through the night.

Q10: Do you agree with the following statement: Most people like me.

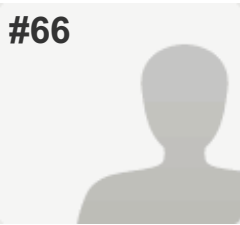
(no label) Agree

Q11: How would you describe the general attitude of the people around you?

(no label) Depressed

Q12: When other people around me are happy... (no label)	I feel happier.
Q13: How satisfied are you with your life right now/ (1=very unsatisfied; 10= very satisfied)	8
Q14: How long do you spend traveling to and from school most days?	<i>Respondent skipped this question</i>
Q15: How often do you daydream?	Rarely
Q16: Do you agree with the following statement: I am usually able to have what I want.	Agree
Q17: What is the most important factor for happiness?	good grade in test + friends
Q18: Male or Female	Female
Q19: Grade Level	10
Q20: Homeroom	g10 wilkes

#66



COMPLETE

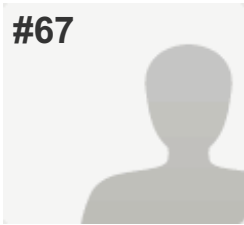
Collector: Web Link 1 (Web Link)
Started: Sunday, February 01, 2015 9:50:17 PM
Last Modified: Sunday, February 01, 2015 9:53:26 PM
Time Spent: 00:03:09
IP Address: 218.78.247.85

PAGE 1

Q1: How would you describe your relationship with your family?	Very Close
Q2: How comfortable are you with the people in your community? (1 = very uncomfortable; 5 = very comfortable)	
(no label)	5
Q3: How many friends could you call if you had a problem?	1-2
Q4: On average, how many hours do you spend on homework per week?	
(no label)	10-20 hours
Q5: How often do you usually smile throughout the day?	All the time
Q6: What is your usual expression when you meet a stranger for the first time?	:-)
Q7: How much time do you spend on social networking each day (wechat, qq, sms, skype, etc.)?	
(no label)	Less than 30 minutes
Q8: How many hours of sleep do you get per night?	7-8
Q9: Describe the quality of your sleep for the last 5 nights	I slept all night long without interruptions.
Q10: Do you agree with the following statement: Most people like me.	
(no label)	Strongly Agree
Q11: How would you describe the general attitude of the people around you?	
(no label)	Friendly

Q12: When other people around me are happy... (no label)	I feel happier.
Q13: How satisfied are you with your life right now/ (1=very unsatisfied; 10= very satisfied)	10
Q14: How long do you spend traveling to and from school most days?	1 hour to 1 and a half hours
Q15: How often do you daydream?	Never
Q16: Do you agree with the following statement: I am usually able to have what I want.	Agree
Q17: What is the most important factor for happiness?	Attitude
Q18: Male or Female	male
Q19: Grade Level	10
Q20: Homeroom	10Wilkes

#67



COMPLETE

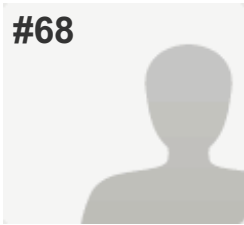
Collector: Web Link 1 (Web Link)
Started: Monday, February 02, 2015 12:06:31 AM
Last Modified: Monday, February 02, 2015 12:15:30 AM
Time Spent: 00:08:58
IP Address: 180.173.106.207

PAGE 1

Q1: How would you describe your relationship with your family?	Very Close
Q2: How comfortable are you with the people in your community? (1 = very uncomfortable; 5 = very comfortable)	
(no label)	2
Q3: How many friends could you call if you had a problem?	5 or more
Q4: On average, how many hours do you spend on homework per week?	
(no label)	10-20 hours
Q5: How often do you usually smile throughout the day?	Sometimes
Q6: What is your usual expression when you meet a stranger for the first time?	:-(
Q7: How much time do you spend on social networking each day (wechat, qq, sms, skype, etc.)?	
(no label)	30 minutes to an hour
Q8: How many hours of sleep do you get per night?	7-8
Q9: Describe the quality of your sleep for the last 5 nights	I slept all night long without interruptions.
Q10: Do you agree with the following statement: Most people like me.	
(no label)	Agree
Q11: How would you describe the general attitude of the people around you?	
(no label)	Friendly

Q12: When other people around me are happy... (no label)	I am not affected.
Q13: How satisfied are you with your life right now/ (1=very unsatisfied; 10= very satisfied)	8
Q14: How long do you spend traveling to and from school most days?	30 to 45 minutes
Q15: How often do you daydream?	Rarely
Q16: Do you agree with the following statement: I am usually able to have what I want.	Disagree
Q17: What is the most important factor for happiness?	friends
Q18: Male or Female	female
Q19: Grade Level	9
Q20: Homeroom	9-Akoto

#68



COMPLETE

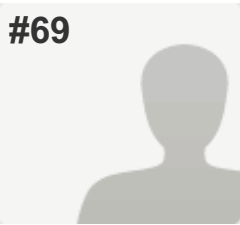
Collector: Web Link 1 (Web Link)
Started: Monday, February 02, 2015 12:05:13 AM
Last Modified: Monday, February 02, 2015 12:15:51 AM
Time Spent: 00:10:38
IP Address: 180.173.106.207

PAGE 1

Q1: How would you describe your relationship with your family?	Very Close
Q2: How comfortable are you with the people in your community? (1 = very uncomfortable; 5 = very comfortable)	
(no label)	3
Q3: How many friends could you call if you had a problem?	5 or more
Q4: On average, how many hours do you spend on homework per week?	
(no label)	10-20 hours
Q5: How often do you usually smile throughout the day?	Sometimes
Q6: What is your usual expression when you meet a stranger for the first time?	:-)
Q7: How much time do you spend on social networking each day (wechat, qq, sms, skype, etc.)?	
(no label)	1.5 to 2 hours
Q8: How many hours of sleep do you get per night?	5-6
Q9: Describe the quality of your sleep for the last 5 nights	I slept mostly all through the night.
Q10: Do you agree with the following statement: Most people like me.	
(no label)	Agree
Q11: How would you describe the general attitude of the people around you?	
(no label)	Friendly

Q12: When other people around me are happy... (no label)	I feel a little better.
Q13: How satisfied are you with your life right now/ (1=very unsatisfied; 10= very satisfied)	7
Q14: How long do you spend traveling to and from school most days?	Less than 20 minutes
Q15: How often do you daydream?	Rarely
Q16: Do you agree with the following statement: I am usually able to have what I want.	Agree
Q17: What is the most important factor for happiness?	friends
Q18: Male or Female	Female
Q19: Grade Level	9
Q20: Homeroom	9G Mr Wes

#69



COMPLETE

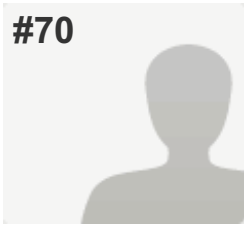
Collector: Web Link 1 (Web Link)
Started: Monday, February 02, 2015 12:43:22 AM
Last Modified: Monday, February 02, 2015 12:52:01 AM
Time Spent: 00:08:39
IP Address: 112.65.189.191

PAGE 1

Q1: How would you describe your relationship with your family?	Very Close
Q2: How comfortable are you with the people in your community? (1 = very uncomfortable; 5 = very comfortable)	
(no label)	3
Q3: How many friends could you call if you had a problem?	5 or more
Q4: On average, how many hours do you spend on homework per week?	
(no label)	10-20 hours
Q5: How often do you usually smile throughout the day?	Sometimes
Q6: What is your usual expression when you meet a stranger for the first time?	--V--
Q7: How much time do you spend on social networking each day (wechat, qq, sms, skype, etc.)?	
(no label)	More than 2 hours
Q8: How many hours of sleep do you get per night?	5-6
Q9: Describe the quality of your sleep for the last 5 nights	I slept mostly all through the night.
Q10: Do you agree with the following statement: Most people like me.	
(no label)	Agree
Q11: How would you describe the general attitude of the people around you?	
(no label)	Friendly

Q12: When other people around me are happy... (no label)	I feel a little better.
Q13: How satisfied are you with your life right now/ (1=very unsatisfied; 10= very satisfied)	8
Q14: How long do you spend traveling to and from school most days?	30 to 45 minutes
Q15: How often do you daydream?	Sometimes
Q16: Do you agree with the following statement: I am usually able to have what I want.	Agree
Q17: What is the most important factor for happiness?	something can make you feel comfortable
Q18: Male or Female	F
Q19: Grade Level	9
Q20: Homeroom	Ms.Akoto

#70



COMPLETE

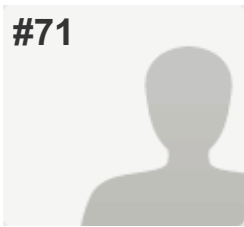
Collector: Web Link 1 (Web Link)
Started: Monday, February 02, 2015 2:10:32 AM
Last Modified: Monday, February 02, 2015 2:14:20 AM
Time Spent: 00:03:48
IP Address: 180.173.106.207

PAGE 1

Q1: How would you describe your relationship with your family?	Very Close
Q2: How comfortable are you with the people in your community? (1 = very uncomfortable; 5 = very comfortable)	
(no label)	3
Q3: How many friends could you call if you had a problem?	5 or more
Q4: On average, how many hours do you spend on homework per week?	
(no label)	2-4 hours
Q5: How often do you usually smile throughout the day?	All the time
Q6: What is your usual expression when you meet a stranger for the first time?	:-(
Q7: How much time do you spend on social networking each day (wechat, qq, sms, skype, etc.)?	
(no label)	30 minutes to an hour
Q8: How many hours of sleep do you get per night?	5-6
Q9: Describe the quality of your sleep for the last 5 nights	I slept mostly all through the night.
Q10: Do you agree with the following statement: Most people like me.	
(no label)	Agree
Q11: How would you describe the general attitude of the people around you?	
(no label)	Friendly

Q12: When other people around me are happy... (no label)	I feel happier.
Q13: How satisfied are you with your life right now/ (1=very unsatisfied; 10= very satisfied)	7
Q14: How long do you spend traveling to and from school most days?	Less than 20 minutes
Q15: How often do you daydream?	Sometimes
Q16: Do you agree with the following statement: I am usually able to have what I want.	Disagree
Q17: What is the most important factor for happiness?	<i>Respondent skipped this question</i>
Q18: Male or Female	female
Q19: Grade Level	10
Q20: Homeroom	10B

#71



COMPLETE

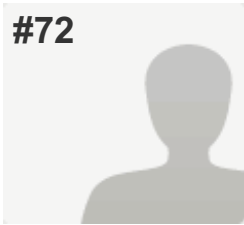
Collector: Web Link 1 (Web Link)
Started: Monday, February 02, 2015 2:49:38 AM
Last Modified: Monday, February 02, 2015 2:51:31 AM
Time Spent: 00:01:52
IP Address: 114.93.8.133

PAGE 1

Q1: How would you describe your relationship with your family?	Very Close
Q2: How comfortable are you with the people in your community? (1 = very uncomfortable; 5 = very comfortable)	
(no label)	1
Q3: How many friends could you call if you had a problem?	1-2
Q4: On average, how many hours do you spend on homework per week?	
(no label)	More than 20 hours
Q5: How often do you usually smile throughout the day?	All the time
Q6: What is your usual expression when you meet a stranger for the first time?	:-)
Q7: How much time do you spend on social networking each day (wechat, qq, sms, skype, etc.)?	
(no label)	30 minutes to an hour
Q8: How many hours of sleep do you get per night?	5-6
Q9: Describe the quality of your sleep for the last 5 nights	I slept all night long without interruptions.
Q10: Do you agree with the following statement: Most people like me.	
(no label)	Strongly Agree
Q11: How would you describe the general attitude of the people around you?	
(no label)	Friendly

Q12: When other people around me are happy... (no label)	I feel happier.
Q13: How satisfied are you with your life right now/ (1=very unsatisfied; 10= very satisfied)	10
Q14: How long do you spend traveling to and from school most days?	Less than 20 minutes
Q15: How often do you daydream?	Sometimes
Q16: Do you agree with the following statement: I am usually able to have what I want.	Strongly Agree
Q17: What is the most important factor for happiness?	<i>Respondent skipped this question</i>
Q18: Male or Female	<i>Respondent skipped this question</i>
Q19: Grade Level	<i>Respondent skipped this question</i>
Q20: Homeroom	<i>Respondent skipped this question</i>

#72



COMPLETE

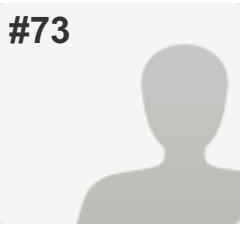
Collector: Web Link 1 (Web Link)
Started: Monday, February 02, 2015 7:21:58 AM
Last Modified: Monday, February 02, 2015 7:24:41 AM
Time Spent: 00:02:43
IP Address: 222.67.69.26

PAGE 1

Q1: How would you describe your relationship with your family?	Fairly Close
Q2: How comfortable are you with the people in your community? (1 = very uncomfortable; 5 = very comfortable)	
(no label)	4
Q3: How many friends could you call if you had a problem?	1-2
Q4: On average, how many hours do you spend on homework per week?	
(no label)	5-9 hours
Q5: How often do you usually smile throughout the day?	Sometimes
Q6: What is your usual expression when you meet a stranger for the first time?	:-)
Q7: How much time do you spend on social networking each day (wechat, qq, sms, skype, etc.)?	
(no label)	30 minutes to an hour
Q8: How many hours of sleep do you get per night?	7-8
Q9: Describe the quality of your sleep for the last 5 nights	I slept mostly all through the night.
Q10: Do you agree with the following statement: Most people like me.	
(no label)	Agree
Q11: How would you describe the general attitude of the people around you?	
(no label)	Friendly

Q12: When other people around me are happy... (no label)	I feel a little better.
Q13: How satisfied are you with your life right now/ (1=very unsatisfied; 10= very satisfied)	7
Q14: How long do you spend traveling to and from school most days?	Less than 20 minutes
Q15: How often do you daydream?	Sometimes
Q16: Do you agree with the following statement: I am usually able to have what I want.	Disagree
Q17: What is the most important factor for happiness?	smile
Q18: Male or Female	male
Q19: Grade Level	G 11
Q20: Homeroom	Wade

#73



COMPLETE

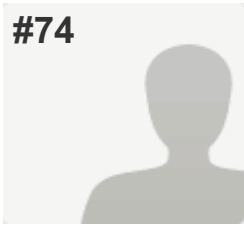
Collector: Web Link 1 (Web Link)
Started: Monday, February 02, 2015 7:46:50 AM
Last Modified: Monday, February 02, 2015 7:50:26 AM
Time Spent: 00:03:36
IP Address: 124.77.233.249

PAGE 1

Q1: How would you describe your relationship with your family?	Very Close
Q2: How comfortable are you with the people in your community? (1 = very uncomfortable; 5 = very comfortable)	
(no label)	3
Q3: How many friends could you call if you had a problem?	5 or more
Q4: On average, how many hours do you spend on homework per week?	
(no label)	2-4 hours
Q5: How often do you usually smile throughout the day?	Sometimes
Q6: What is your usual expression when you meet a stranger for the first time?	:-)
Q7: How much time do you spend on social networking each day (wechat, qq, sms, skype, etc.)?	
(no label)	30 minutes to an hour
Q8: How many hours of sleep do you get per night?	7-8
Q9: Describe the quality of your sleep for the last 5 nights	I didn't sleep very much
Q10: Do you agree with the following statement: Most people like me.	
(no label)	Agree
Q11: How would you describe the general attitude of the people around you?	
(no label)	Friendly

Q12: When other people around me are happy... (no label)	I feel happier.
Q13: How satisfied are you with your life right now/ (1=very unsatisfied; 10= very satisfied)	10
Q14: How long do you spend traveling to and from school most days?	1 hour to 1 and a half hours
Q15: How often do you daydream?	Rarely
Q16: Do you agree with the following statement: I am usually able to have what I want.	Agree
Q17: What is the most important factor for happiness?	family, friend
Q18: Male or Female	female
Q19: Grade Level	g9
Q20: Homeroom	c411

#74



COMPLETE

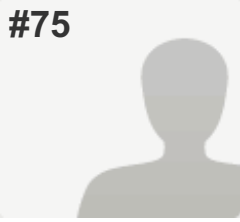
Collector: Web Link 1 (Web Link)
Started: Monday, February 02, 2015 7:48:27 AM
Last Modified: Monday, February 02, 2015 7:52:30 AM
Time Spent: 00:04:03
IP Address: 124.79.171.132

PAGE 1

Q1: How would you describe your relationship with your family?	Very Close
Q2: How comfortable are you with the people in your community? (1 = very uncomfortable; 5 = very comfortable)	
(no label)	4
Q3: How many friends could you call if you had a problem?	0
Q4: On average, how many hours do you spend on homework per week?	
(no label)	5-9 hours
Q5: How often do you usually smile throughout the day?	Sometimes
Q6: What is your usual expression when you meet a stranger for the first time?	--V--
Q7: How much time do you spend on social networking each day (wechat, qq, sms, skype, etc.)?	
(no label)	More than 2 hours
Q8: How many hours of sleep do you get per night?	5-6
Q9: Describe the quality of your sleep for the last 5 nights	I slept mostly all through the night.
Q10: Do you agree with the following statement: Most people like me.	
(no label)	Disagree
Q11: How would you describe the general attitude of the people around you?	
(no label)	Friendly

Q12: When other people around me are happy... (no label)	I feel a little better.
Q13: How satisfied are you with your life right now/ (1=very unsatisfied; 10= very satisfied)	8
Q14: How long do you spend traveling to and from school most days?	30 to 45 minutes
Q15: How often do you daydream?	Rarely
Q16: Do you agree with the following statement: I am usually able to have what I want.	Disagree
Q17: What is the most important factor for happiness?	dont know
Q18: Male or Female	male
Q19: Grade Level	10
Q20: Homeroom	white

#75

**COMPLETE****Collector:** Web Link 1 (Web Link)**Started:** Monday, February 02, 2015 7:47:43 AM**Last Modified:** Monday, February 02, 2015 7:54:15 AM**Time Spent:** 00:06:31**IP Address:** 114.94.73.228

PAGE 1

Q1: How would you describe your relationship with your family? Fairly Close

Q2: How comfortable are you with the people in your community? (1 = very uncomfortable; 5 = very comfortable)

(no label) 4

Q3: How many friends could you call if you had a problem? 0

Q4: On average, how many hours do you spend on homework per week?

(no label) 5-9 hours

Q5: How often do you usually smile throughout the day? Sometimes

Q6: What is your usual expression when you meet a stranger for the first time? --V--

Q7: How much time do you spend on social networking each day (wechat, qq, sms, skype, etc.)?

(no label) More than 2 hours

Q8: How many hours of sleep do you get per night? 7-8

Q9: Describe the quality of your sleep for the last 5 nights I slept mostly all through the night.

Q10: Do you agree with the following statement: Most people like me.

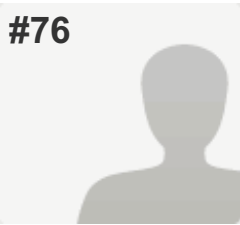
(no label) Agree

Q11: How would you describe the general attitude of the people around you?

(no label) Friendly

Q12: When other people around me are happy... (no label)	I feel happier.
Q13: How satisfied are you with your life right now/ (1=very unsatisfied; 10= very satisfied)	5
Q14: How long do you spend traveling to and from school most days?	30 to 45 minutes
Q15: How often do you daydream?	Rarely
Q16: Do you agree with the following statement: I am usually able to have what I want.	Agree
Q17: What is the most important factor for happiness?	Have the things you want
Q18: Male or Female	Female
Q19: Grade Level	9
Q20: Homeroom	Mr Wes

#76



COMPLETE

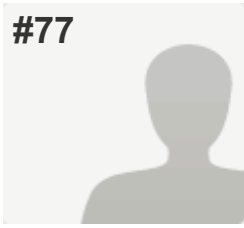
Collector: Web Link 1 (Web Link)
Started: Monday, February 02, 2015 7:56:39 AM
Last Modified: Monday, February 02, 2015 8:01:03 AM
Time Spent: 00:04:24
IP Address: 222.64.33.253

PAGE 1

Q1: How would you describe your relationship with your family?	Fairly Close
Q2: How comfortable are you with the people in your community? (1 = very uncomfortable; 5 = very comfortable)	
(no label)	3
Q3: How many friends could you call if you had a problem?	3-4
Q4: On average, how many hours do you spend on homework per week?	
(no label)	5-9 hours
Q5: How often do you usually smile throughout the day?	All the time
Q6: What is your usual expression when you meet a stranger for the first time?	TVT
Q7: How much time do you spend on social networking each day (wechat, qq, sms, skype, etc.)?	
(no label)	30 minutes to an hour
Q8: How many hours of sleep do you get per night?	5-6
Q9: Describe the quality of your sleep for the last 5 nights	I didn't sleep very much
Q10: Do you agree with the following statement: Most people like me.	
(no label)	Agree
Q11: How would you describe the general attitude of the people around you?	
(no label)	Friendly

Q12: When other people around me are happy... (no label)	I feel happier.
Q13: How satisfied are you with your life right now/ (1=very unsatisfied; 10= very satisfied)	5
Q14: How long do you spend traveling to and from school most days?	30 to 45 minutes
Q15: How often do you daydream?	Sometimes
Q16: Do you agree with the following statement: I am usually able to have what I want.	Disagree
Q17: What is the most important factor for happiness?	many
Q18: Male or Female	female
Q19: Grade Level	9
Q20: Homeroom	mr koopman

#77

**COMPLETE****Collector:** Web Link 1 (Web Link)**Started:** Monday, February 02, 2015 7:50:36 AM**Last Modified:** Monday, February 02, 2015 8:06:03 AM**Time Spent:** 00:15:27**IP Address:** 58.38.180.33

PAGE 1

Q1: How would you describe your relationship with your family? Fairly Close

Q2: How comfortable are you with the people in your community? (1 = very uncomfortable; 5 = very comfortable)

(no label) 2

Q3: How many friends could you call if you had a problem? 1-2

Q4: On average, how many hours do you spend on homework per week?

(no label) 2-4 hours

Q5: How often do you usually smile throughout the day? All the time

Q6: What is your usual expression when you meet a stranger for the first time? :-)

Q7: How much time do you spend on social networking each day (wechat, qq, sms, skype, etc.)?

(no label) 1.5 to 2 hours

Q8: How many hours of sleep do you get per night? 5-6

Q9: Describe the quality of your sleep for the last 5 nights I didn't sleep very much

Q10: Do you agree with the following statement: Most people like me.

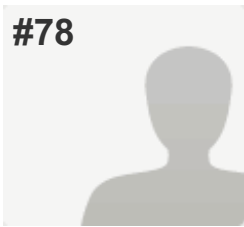
(no label) Disagree

Q11: How would you describe the general attitude of the people around you?

(no label) Friendly

Q12: When other people around me are happy... (no label)	I feel even worse.
Q13: How satisfied are you with your life right now/ (1=very unsatisfied; 10= very satisfied)	5
Q14: How long do you spend traveling to and from school most days?	30 to 45 minutes
Q15: How often do you daydream?	Rarely
Q16: Do you agree with the following statement: I am usually able to have what I want.	Agree
Q17: What is the most important factor for happiness?	Might be love?
Q18: Male or Female	Female
Q19: Grade Level	9
Q20: Homeroom	G9akoto

#78



COMPLETE

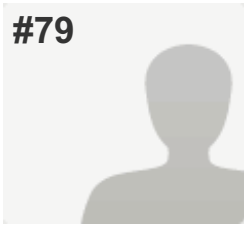
Collector: Web Link 1 (Web Link)
Started: Monday, February 02, 2015 8:08:52 AM
Last Modified: Monday, February 02, 2015 8:13:04 AM
Time Spent: 00:04:12
IP Address: 116.238.98.229

PAGE 1

Q1: How would you describe your relationship with your family?	Fairly Close
Q2: How comfortable are you with the people in your community? (1 = very uncomfortable; 5 = very comfortable) (no label)	4
Q3: How many friends could you call if you had a problem?	<i>Respondent skipped this question</i>
Q4: On average, how many hours do you spend on homework per week? (no label)	10-20 hours
Q5: How often do you usually smile throughout the day?	<i>Respondent skipped this question</i>
Q6: What is your usual expression when you meet a stranger for the first time?	--V--
Q7: How much time do you spend on social networking each day (wechat, qq, sms, skype, etc.)? (no label)	1.5 to 2 hours
Q8: How many hours of sleep do you get per night?	5-6
Q9: Describe the quality of your sleep for the last 5 nights	<i>Respondent skipped this question</i>
Q10: Do you agree with the following statement: Most people like me. (no label)	Agree
Q11: How would you describe the general attitude of the people around you? (no label)	Friendly

Q12: When other people around me are happy... (no label)	I feel a little better.
Q13: How satisfied are you with your life right now/ (1=very unsatisfied; 10= very satisfied)	8
Q14: How long do you spend traveling to and from school most days?	1 hour to 1 and a half hours
Q15: How often do you daydream?	Sometimes
Q16: Do you agree with the following statement: I am usually able to have what I want.	Agree
Q17: What is the most important factor for happiness?	get higher score have a girlfriend
Q18: Male or Female	male
Q19: Grade Level	9
Q20: Homeroom	akoto

#79



COMPLETE

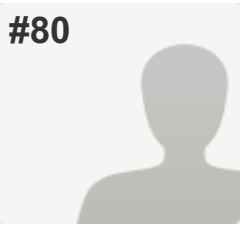
Collector: Web Link 1 (Web Link)
Started: Monday, February 02, 2015 2:30:31 PM
Last Modified: Monday, February 02, 2015 2:47:26 PM
Time Spent: 00:16:55
IP Address: 101.83.184.243

PAGE 1

Q1: How would you describe your relationship with your family?	Very Close
Q2: How comfortable are you with the people in your community? (1 = very uncomfortable; 5 = very comfortable)	
(no label)	4
Q3: How many friends could you call if you had a problem?	1-2
Q4: On average, how many hours do you spend on homework per week?	
(no label)	10-20 hours
Q5: How often do you usually smile throughout the day?	Sometimes
Q6: What is your usual expression when you meet a stranger for the first time?	TVT
Q7: How much time do you spend on social networking each day (wechat, qq, sms, skype, etc.)?	
(no label)	Less than 30 minutes
Q8: How many hours of sleep do you get per night?	Less than 5
Q9: Describe the quality of your sleep for the last 5 nights	I woke up more than twice every night.
Q10: Do you agree with the following statement: Most people like me.	
(no label)	Strongly Agree
Q11: How would you describe the general attitude of the people around you?	
(no label)	Friendly

Q12: When other people around me are happy... (no label)	I feel a little better.
Q13: How satisfied are you with your life right now/ (1=very unsatisfied; 10= very satisfied)	8
Q14: How long do you spend traveling to and from school most days?	30 to 45 minutes
Q15: How often do you daydream?	All the time
Q16: Do you agree with the following statement: I am usually able to have what I want.	Agree
Q17: What is the most important factor for happiness?	Do what you love with what/who you love
Q18: Male or Female	M
Q19: Grade Level	B
Q20: Homeroom	11b

#80

**COMPLETE****Collector:** Web Link 1 (Web Link)**Started:** Monday, February 02, 2015 2:54:18 PM**Last Modified:** Monday, February 02, 2015 2:55:56 PM**Time Spent:** 00:01:37**IP Address:** 223.167.7.160

PAGE 1

Q1: How would you describe your relationship with your family? Very Close

Q2: How comfortable are you with the people in your community? (1 = very uncomfortable; 5 = very comfortable)

(no label) 4

Q3: How many friends could you call if you had a problem? 3-4

Q4: On average, how many hours do you spend on homework per week?

(no label) 2-4 hours

Q5: How often do you usually smile throughout the day? All the time

Q6: What is your usual expression when you meet a stranger for the first time? :-)

Q7: How much time do you spend on social networking each day (wechat, qq, sms, skype, etc.)?

(no label) More than 2 hours

Q8: How many hours of sleep do you get per night? 7-8

Q9: Describe the quality of your sleep for the last 5 nights I slept all night long without interruptions.

Q10: Do you agree with the following statement: Most people like me.

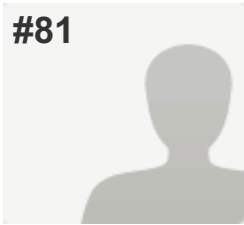
(no label) Agree

Q11: How would you describe the general attitude of the people around you?

(no label) Friendly

Q12: When other people around me are happy... (no label)	I feel happier.
Q13: How satisfied are you with your life right now/ (1=very unsatisfied; 10= very satisfied)	8
Q14: How long do you spend traveling to and from school most days?	Less than 20 minutes
Q15: How often do you daydream?	All the time
Q16: Do you agree with the following statement: I am usually able to have what I want.	Agree
Q17: What is the most important factor for happiness?	friends family
Q18: Male or Female	female
Q19: Grade Level	9
Q20: Homeroom	9C401

#81



COMPLETE

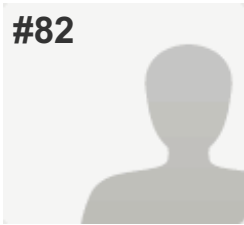
Collector: Web Link 1 (Web Link)
Started: Monday, February 02, 2015 3:03:29 PM
Last Modified: Monday, February 02, 2015 3:06:14 PM
Time Spent: 00:02:45
IP Address: 222.67.180.210

PAGE 1

Q1: How would you describe your relationship with your family?	Very Close
Q2: How comfortable are you with the people in your community? (1 = very uncomfortable; 5 = very comfortable)	
(no label)	4
Q3: How many friends could you call if you had a problem?	3-4
Q4: On average, how many hours do you spend on homework per week?	
(no label)	More than 20 hours
Q5: How often do you usually smile throughout the day?	Sometimes
Q6: What is your usual expression when you meet a stranger for the first time?	:-)
Q7: How much time do you spend on social networking each day (wechat, qq, sms, skype, etc.)?	
(no label)	1.5 to 2 hours
Q8: How many hours of sleep do you get per night?	5-6
Q9: Describe the quality of your sleep for the last 5 nights	I didn't sleep very much
Q10: Do you agree with the following statement: Most people like me.	
(no label)	Agree
Q11: How would you describe the general attitude of the people around you?	
(no label)	Friendly

Q12: When other people around me are happy... (no label)	I feel even worse.
Q13: How satisfied are you with your life right now/ (1=very unsatisfied; 10= very satisfied)	9
Q14: How long do you spend traveling to and from school most days?	Less than 20 minutes
Q15: How often do you daydream?	All the time
Q16: Do you agree with the following statement: I am usually able to have what I want.	Agree
Q17: What is the most important factor for happiness?	Love
Q18: Male or Female	Male
Q19: Grade Level	11
Q20: Homeroom	11B

#82



COMPLETE

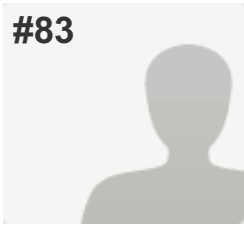
Collector: Web Link 1 (Web Link)
Started: Monday, February 02, 2015 6:02:07 PM
Last Modified: Monday, February 02, 2015 6:07:19 PM
Time Spent: 00:05:11
IP Address: 222.64.86.29

PAGE 1

Q1: How would you describe your relationship with your family?	Very Close
Q2: How comfortable are you with the people in your community? (1 = very uncomfortable; 5 = very comfortable)	
(no label)	4
Q3: How many friends could you call if you had a problem?	3-4
Q4: On average, how many hours do you spend on homework per week?	
(no label)	5-9 hours
Q5: How often do you usually smile throughout the day?	All the time
Q6: What is your usual expression when you meet a stranger for the first time?	:-)
Q7: How much time do you spend on social networking each day (wechat, qq, sms, skype, etc.)?	
(no label)	More than 2 hours
Q8: How many hours of sleep do you get per night?	5-6
Q9: Describe the quality of your sleep for the last 5 nights	I slept mostly all through the night.
Q10: Do you agree with the following statement: Most people like me.	
(no label)	Agree
Q11: How would you describe the general attitude of the people around you?	
(no label)	Friendly

Q12: When other people around me are happy... (no label)	I feel happier.
Q13: How satisfied are you with your life right now/ (1=very unsatisfied; 10= very satisfied)	6
Q14: How long do you spend traveling to and from school most days?	Less than 20 minutes
Q15: How often do you daydream?	Sometimes
Q16: Do you agree with the following statement: I am usually able to have what I want.	Agree
Q17: What is the most important factor for happiness?	Friends
Q18: Male or Female	Male
Q19: Grade Level	10
Q20: Homeroom	10 White

#83



COMPLETE

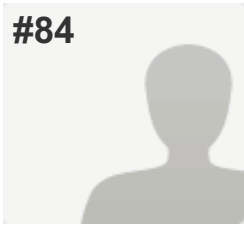
Collector: Web Link 1 (Web Link)
Started: Monday, February 02, 2015 8:52:27 PM
Last Modified: Monday, February 02, 2015 8:55:32 PM
Time Spent: 00:03:04
IP Address: 180.173.106.207

PAGE 1

Q1: How would you describe your relationship with your family?	Fairly Close
Q2: How comfortable are you with the people in your community? (1 = very uncomfortable; 5 = very comfortable)	
(no label)	5
Q3: How many friends could you call if you had a problem?	5 or more
Q4: On average, how many hours do you spend on homework per week?	
(no label)	2-4 hours
Q5: How often do you usually smile throughout the day?	Sometimes
Q6: What is your usual expression when you meet a stranger for the first time?	--V--
Q7: How much time do you spend on social networking each day (wechat, qq, sms, skype, etc.)?	
(no label)	1.5 to 2 hours
Q8: How many hours of sleep do you get per night?	7-8
Q9: Describe the quality of your sleep for the last 5 nights	I woke up more than twice every night.
Q10: Do you agree with the following statement: Most people like me.	
(no label)	Agree
Q11: How would you describe the general attitude of the people around you?	
(no label)	Friendly

Q12: When other people around me are happy... (no label)	I feel happier.
Q13: How satisfied are you with your life right now/ (1=very unsatisfied; 10= very satisfied)	6
Q14: How long do you spend traveling to and from school most days?	30 to 45 minutes
Q15: How often do you daydream?	Sometimes
Q16: Do you agree with the following statement: I am usually able to have what I want.	Disagree
Q17: What is the most important factor for happiness?	feeling
Q18: Male or Female	male
Q19: Grade Level	11
Q20: Homeroom	Alan

#84



COMPLETE

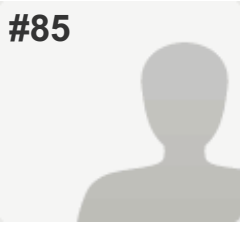
Collector: Web Link 1 (Web Link)
Started: Tuesday, February 03, 2015 12:23:08 AM
Last Modified: Tuesday, February 03, 2015 12:26:41 AM
Time Spent: 00:03:33
IP Address: 180.173.106.207

PAGE 1

Q1: How would you describe your relationship with your family?	Fairly Close
Q2: How comfortable are you with the people in your community? (1 = very uncomfortable; 5 = very comfortable)	
(no label)	3
Q3: How many friends could you call if you had a problem?	3-4
Q4: On average, how many hours do you spend on homework per week?	
(no label)	2-4 hours
Q5: How often do you usually smile throughout the day?	Sometimes
Q6: What is your usual expression when you meet a stranger for the first time?	TVT
Q7: How much time do you spend on social networking each day (wechat, qq, sms, skype, etc.)?	
(no label)	1.5 to 2 hours
Q8: How many hours of sleep do you get per night?	5-6
Q9: Describe the quality of your sleep for the last 5 nights	I slept mostly all through the night.
Q10: Do you agree with the following statement: Most people like me.	
(no label)	Disagree
Q11: How would you describe the general attitude of the people around you?	
(no label)	Friendly

Q12: When other people around me are happy... (no label)	I feel a little better.
Q13: How satisfied are you with your life right now/ (1=very unsatisfied; 10= very satisfied)	5
Q14: How long do you spend traveling to and from school most days?	Less than 20 minutes
Q15: How often do you daydream?	Sometimes
Q16: Do you agree with the following statement: I am usually able to have what I want.	Agree
Q17: What is the most important factor for happiness?	people understand you
Q18: Male or Female	female
Q19: Grade Level	11
Q20: Homeroom	<i>Respondent skipped this question</i>

#85



COMPLETE

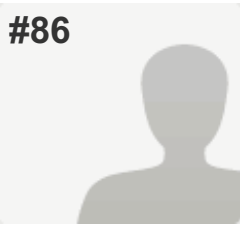
Collector: Web Link 1 (Web Link)
Started: Tuesday, February 03, 2015 2:10:08 AM
Last Modified: Tuesday, February 03, 2015 2:17:10 AM
Time Spent: 00:07:01
IP Address: 124.78.111.26

PAGE 1

Q1: How would you describe your relationship with your family?	Very Close
Q2: How comfortable are you with the people in your community? (1 = very uncomfortable; 5 = very comfortable)	
(no label)	4
Q3: How many friends could you call if you had a problem?	1-2
Q4: On average, how many hours do you spend on homework per week?	
(no label)	10-20 hours
Q5: How often do you usually smile throughout the day?	All the time
Q6: What is your usual expression when you meet a stranger for the first time?	:-)
Q7: How much time do you spend on social networking each day (wechat, qq, sms, skype, etc.)?	
(no label)	30 minutes to an hour
Q8: How many hours of sleep do you get per night?	7-8
Q9: Describe the quality of your sleep for the last 5 nights	I slept mostly all through the night.
Q10: Do you agree with the following statement: Most people like me.	
(no label)	Agree
Q11: How would you describe the general attitude of the people around you?	
(no label)	Friendly

Q12: When other people around me are happy... (no label)	(no label)
Q13: How satisfied are you with your life right now/ (1=very unsatisfied; 10= very satisfied)	10
Q14: How long do you spend traveling to and from school most days?	30 to 45 minutes
Q15: How often do you daydream?	All the time
Q16: Do you agree with the following statement: I am usually able to have what I want.	Agree
Q17: What is the most important factor for happiness?	<i>Respondent skipped this question</i>
Q18: Male or Female	female
Q19: Grade Level	9
Q20: Homeroom	cuff

#86

**COMPLETE****Collector:** Web Link 1 (Web Link)**Started:** Tuesday, February 03, 2015 4:21:43 AM**Last Modified:** Tuesday, February 03, 2015 4:26:14 AM**Time Spent:** 00:04:31**IP Address:** 180.156.123.87

PAGE 1

Q1: How would you describe your relationship with your family? Very Close

Q2: How comfortable are you with the people in your community? (1 = very uncomfortable; 5 = very comfortable)

(no label) 3

Q3: How many friends could you call if you had a problem? 3-4

Q4: On average, how many hours do you spend on homework per week?

(no label) 10-20 hours

Q5: How often do you usually smile throughout the day? Sometimes

Q6: What is your usual expression when you meet a stranger for the first time? :-)

Q7: How much time do you spend on social networking each day (wechat, qq, sms, skype, etc.)?

(no label) 1.5 to 2 hours

Q8: How many hours of sleep do you get per night? 5-6

Q9: Describe the quality of your sleep for the last 5 nights I slept all night long without interruptions.

Q10: Do you agree with the following statement: Most people like me.

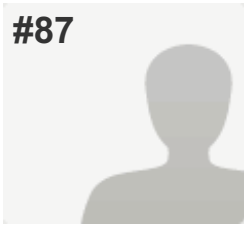
(no label) Agree

Q11: How would you describe the general attitude of the people around you?

(no label) Friendly

Q12: When other people around me are happy... (no label)	I feel a little better.
Q13: How satisfied are you with your life right now/ (1=very unsatisfied; 10= very satisfied)	7
Q14: How long do you spend traveling to and from school most days?	30 to 45 minutes
Q15: How often do you daydream?	Sometimes
Q16: Do you agree with the following statement: I am usually able to have what I want.	Agree
Q17: What is the most important factor for happiness?	Schoolwork
Q18: Male or Female	Female
Q19: Grade Level	11
Q20: Homeroom	11A

#87



COMPLETE

Collector: Web Link 1 (Web Link)

Started: Tuesday, February 03, 2015 3:56:59 PM

Last Modified: Tuesday, February 03, 2015 4:02:44 PM

Time Spent: 00:05:44

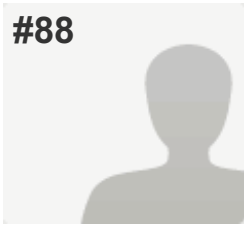
IP Address: 180.173.106.207

PAGE 1

Q1: How would you describe your relationship with your family?	Very Close
Q2: How comfortable are you with the people in your community? (1 = very uncomfortable; 5 = very comfortable)	
(no label)	3
Q3: How many friends could you call if you had a problem?	1-2
Q4: On average, how many hours do you spend on homework per week?	
(no label)	2-4 hours
Q5: How often do you usually smile throughout the day?	Sometimes
Q6: What is your usual expression when you meet a stranger for the first time?	--V--
Q7: How much time do you spend on social networking each day (wechat, qq, sms, skype, etc.)?	
(no label)	30 minutes to an hour
Q8: How many hours of sleep do you get per night?	More than 8
Q9: Describe the quality of your sleep for the last 5 nights	I slept mostly all through the night.
Q10: Do you agree with the following statement: Most people like me.	
(no label)	Agree
Q11: How would you describe the general attitude of the people around you?	
(no label)	Friendly

Q12: When other people around me are happy... (no label)	I feel happier.
Q13: How satisfied are you with your life right now/ (1=very unsatisfied; 10= very satisfied)	5
Q14: How long do you spend traveling to and from school most days?	Less than 20 minutes
Q15: How often do you daydream?	Sometimes
Q16: Do you agree with the following statement: I am usually able to have what I want.	Agree
Q17: What is the most important factor for happiness?	friends
Q18: Male or Female	female
Q19: Grade Level	reception
Q20: Homeroom	cooper

#88

**COMPLETE****Collector:** Web Link 1 (Web Link)**Started:** Wednesday, February 04, 2015 5:06:50 AM**Last Modified:** Wednesday, February 04, 2015 5:09:00 AM**Time Spent:** 00:02:10**IP Address:** 140.207.6.243

PAGE 1

Q1: How would you describe your relationship with your family? Not Close, but we get along

Q2: How comfortable are you with the people in your community? (1 = very uncomfortable; 5 = very comfortable)

(no label) 4

Q3: How many friends could you call if you had a problem? 5 or more

Q4: On average, how many hours do you spend on homework per week?

(no label) 10-20 hours

Q5: How often do you usually smile throughout the day? Sometimes

Q6: What is your usual expression when you meet a stranger for the first time? *Respondent skipped this question*

Q7: How much time do you spend on social networking each day (wechat, qq, sms, skype, etc.)?

(no label) 1.5 to 2 hours

Q8: How many hours of sleep do you get per night? 5-6

Q9: Describe the quality of your sleep for the last 5 nights I slept all night long without interruptions.

Q10: Do you agree with the following statement: Most people like me.

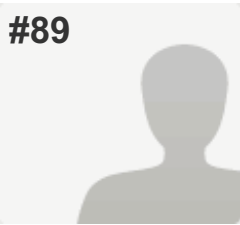
(no label) Agree

Q11: How would you describe the general attitude of the people around you?

(no label) Friendly

Q12: When other people around me are happy... (no label)	I feel a little better.
Q13: How satisfied are you with your life right now/ (1=very unsatisfied; 10= very satisfied)	7
Q14: How long do you spend traveling to and from school most days?	Less than 20 minutes
Q15: How often do you daydream?	All the time
Q16: Do you agree with the following statement: I am usually able to have what I want.	Disagree
Q17: What is the most important factor for happiness?	Freedom
Q18: Male or Female	Female
Q19: Grade Level	G10
Q20: Homeroom	Wilkes

#89



COMPLETE

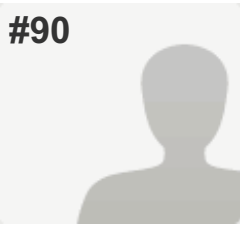
Collector: Web Link 1 (Web Link)
Started: Wednesday, February 04, 2015 5:06:52 AM
Last Modified: Wednesday, February 04, 2015 5:09:49 AM
Time Spent: 00:02:57
IP Address: 61.173.114.135

PAGE 1

Q1: How would you describe your relationship with your family?	Very Close
Q2: How comfortable are you with the people in your community? (1 = very uncomfortable; 5 = very comfortable)	
(no label)	4
Q3: How many friends could you call if you had a problem?	1-2
Q4: On average, how many hours do you spend on homework per week?	
(no label)	2-4 hours
Q5: How often do you usually smile throughout the day?	All the time
Q6: What is your usual expression when you meet a stranger for the first time?	:-)
Q7: How much time do you spend on social networking each day (wechat, qq, sms, skype, etc.)?	
(no label)	30 minutes to an hour
Q8: How many hours of sleep do you get per night?	7-8
Q9: Describe the quality of your sleep for the last 5 nights	I slept mostly all through the night.
Q10: Do you agree with the following statement: Most people like me.	
(no label)	Agree
Q11: How would you describe the general attitude of the people around you?	
(no label)	Friendly

Q12: When other people around me are happy... (no label)	I feel happier.
Q13: How satisfied are you with your life right now/ (1=very unsatisfied; 10= very satisfied)	9
Q14: How long do you spend traveling to and from school most days?	30 to 45 minutes
Q15: How often do you daydream?	All the time
Q16: Do you agree with the following statement: I am usually able to have what I want.	Agree
Q17: What is the most important factor for happiness?	To live the life you like, or like the life you live.
Q18: Male or Female	F
Q19: Grade Level	12
Q20: Homeroom	12

#90



COMPLETE

Collector: Web Link 1 (Web Link)
Started: Wednesday, February 04, 2015 3:39:48 PM
Last Modified: Wednesday, February 04, 2015 3:43:22 PM
Time Spent: 00:03:33
IP Address: 180.173.106.207

PAGE 1

Q1: How would you describe your relationship with your family?	Very Close
Q2: How comfortable are you with the people in your community? (1 = very uncomfortable; 5 = very comfortable)	
(no label)	4
Q3: How many friends could you call if you had a problem?	5 or more
Q4: On average, how many hours do you spend on homework per week?	
(no label)	5-9 hours
Q5: How often do you usually smile throughout the day?	Sometimes
Q6: What is your usual expression when you meet a stranger for the first time?	:-)
Q7: How much time do you spend on social networking each day (wechat, qq, sms, skype, etc.)?	
(no label)	30 minutes to an hour
Q8: How many hours of sleep do you get per night?	5-6
Q9: Describe the quality of your sleep for the last 5 nights	I slept all night long without interruptions.
Q10: Do you agree with the following statement: Most people like me.	
(no label)	Agree
Q11: How would you describe the general attitude of the people around you?	
(no label)	Friendly

Q12: When other people around me are happy... (no label)	I feel happier.
Q13: How satisfied are you with your life right now/ (1=very unsatisfied; 10= very satisfied)	9
Q14: How long do you spend traveling to and from school most days?	30 to 45 minutes
Q15: How often do you daydream?	Sometimes
Q16: Do you agree with the following statement: I am usually able to have what I want.	Agree
Q17: What is the most important factor for happiness?	Good relationship with others
Q18: Male or Female	Female
Q19: Grade Level	11
Q20: Homeroom	11A